

CASC5 IHC Antibody

Rabbit Polyclonal

Antigen Affinity Purified

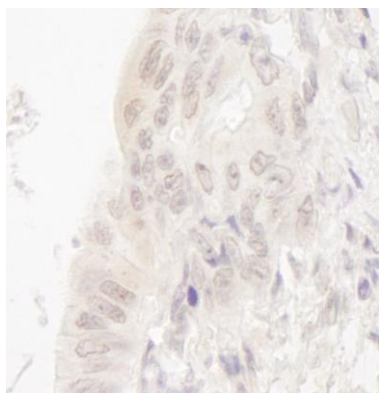
Protein ID NP_733468.2

Catalog No. IHC-00500-T

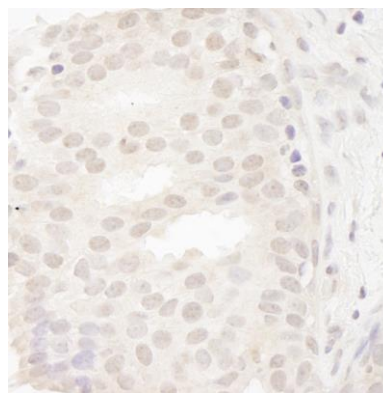
GeneID 57082



APPLICATIONS	IHC
SPECIES REACTIVITY	Human
AMOUNT	10 µl
CONCENTRATION	250 µg/ml
STORAGE/SHELF LIFE	2 – 8° C / 1 year from date of receipt
PHYSICAL STATE	Liquid
BUFFER	Tris-buffered Saline containing 0.1% BSA and 0.09% Sodium Azide
ISOTYPE	IgG
ORIGIN	USA
PRODUCTION PROCEDURES	<p>Antibody was affinity purified using an epitope specific to CASC5 immobilized on solid support.</p> <p>The epitope recognized by IHC-00500-T maps to a region between residue 300 and 350 of human Cancer Susceptibility Candidate 5 using the numbering given in entry NP_733468.2 (GeneID 57082).</p> <p>Immunoglobulin concentration was determined by extinction coefficient: absorbance at 280 nm of 1.4 equals 1.0 mg of IgG.</p>
APPLICATIONS	<p>Centrifuge tube to remove product from lid. Optimal working dilutions should be determined experimentally by the investigator. Prepare working dilution immediately before use.</p> <p>Immunohistochemistry 1:100 – 1:500</p>
APPLICATION NOTES	<p>Epitope exposure is recommended.</p> <p>Epitope exposure with tris-EDTA pH9.0 buffer will enhance staining.</p> <p>Likely to work with frozen sections.</p>
IHC HUMAN CONTROLS	<p>In some cases, the antibody may be diluted further than indicated.</p> <p>Breast Carcinoma, Non-Small Cell Lung Cancer, Testicular Seminoma</p>
ADDITIONAL INFO	<p>https://www.bethyl.com/product/IHC-00500-T</p> <p>Use the link above to view SDS, a current list of citations, and other product specific information.</p>



Detection of human CASC5 by immunohistochemistry.
Sample: FFPE section of human lung carcinoma. *Antibody:* Affinity purified rabbit anti-CASC5 (Cat. No. IHC-00500-T) used at a dilution of 1:250. *Detection:* DAB



Detection of human CASC5 by immunohistochemistry.
Sample: FFPE section of human breast carcinoma. *Antibody:* Affinity purified rabbit anti-CASC5 (Cat. No. IHC-00500-T) used at a dilution of 1:250. *Detection:* DAB