

# ABCB9 IHC Antibody

Rabbit Polyclonal

Antigen Affinity Purified

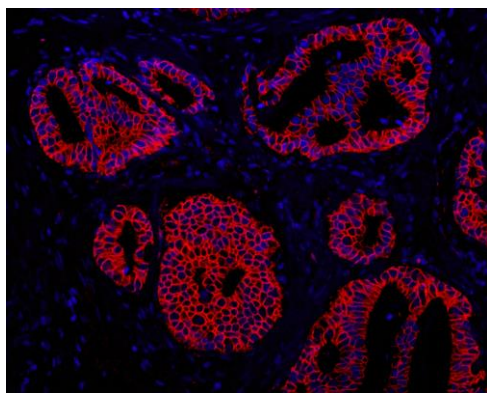
Protein ID NP\_062571.1

Catalog No. IHC-00398-T

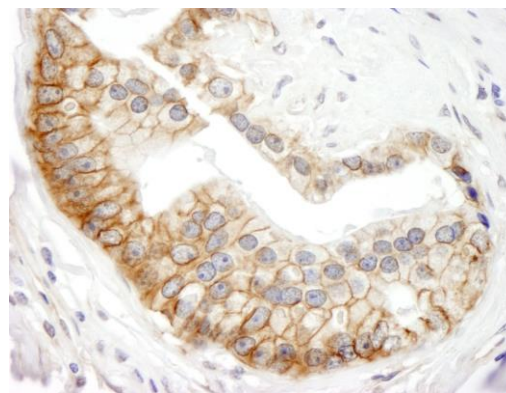
GeneID 23457



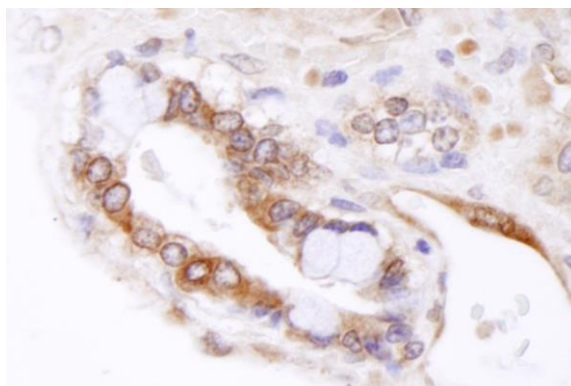
<b>APPLICATIONS</b>	IHC, IHC-IF
<b>SPECIES REACTIVITY</b>	Human, Mouse
<b>AMOUNT</b>	10 µl
<b>CONCENTRATION</b>	500 µg/ml
<b>STORAGE/SHELF LIFE</b>	2 – 8° C / 1 year from date of receipt
<b>PHYSICAL STATE</b>	Liquid
<b>BUFFER</b>	Tris-buffered Saline containing 0.1% BSA and 0.09% Sodium Azide
<b>ISOTYPE</b>	IgG
<b>ORIGIN</b>	USA
<b>PRODUCTION PROCEDURES</b>	<p>Antibody was affinity purified using an epitope specific to ABCB9 immobilized on solid support.</p> <p>The epitope recognized by IHC-00398-T maps to a region between residue 475 and 525 of human ATP-binding cassette, sub-family B (MDR/TAP), member 9 using the numbering given in entry NP_062571.1 (GeneID 23457).</p> <p>Antibody concentration was determined by extinction coefficient: absorbance at 280 nm of 1.4 equals 1.0 mg of IgG.</p>
<b>APPLICATIONS</b>	<p>Centrifuge tube to remove product from lid. Optimal working dilutions should be determined experimentally by the investigator. Prepare working dilution immediately before use.</p> <p>Immunohistochemistry 1:100 – 1:500</p> <p>Immunofluorescence 1:50 – 1:500 (IHC)</p>
<b>APPLICATION NOTES</b>	<p>Epitope exposure is recommended.</p> <p>Epitope exposure with citrate or tris-EDTA pH9.0 buffer will enhance staining.</p> <p>Likely to work with frozen sections.</p> <p>In some cases, the antibody may be diluted further than indicated.</p>
<b>IHC HUMAN CONTROLS</b>	Anaplastic Thyroid Carcinoma, Colon Carcinoma, Ovarian Carcinoma, Placenta, Prostate Carcinoma
<b>IHC MOUSE CONTROLS</b>	Teratoma
<b>ADDITIONAL INFO</b>	<p><a href="https://www.bethyl.com/product/IHC-00398-T">https://www.bethyl.com/product/IHC-00398-T</a></p> <p>Use the link above to view SDS, a current list of citations, and other product specific information.</p>



**Detection of human ABCB9 by immunohistochemistry.**  
*Sample:* FFPE section of human prostate carcinoma.  
*Antibody:* Affinity purified rabbit anti-ABCB9 (Cat. No. IHC-00398-T) used at a dilution of 1:100. *Detection:* Red-fluorescent goat anti-rabbit IgG highly cross-adsorbed Antibody Hilyte Plus™ 555 used at a dilution of 1:100.



**Detection of human ABCB9 by immunohistochemistry.**  
*Sample:* FFPE section of human prostate carcinoma.  
*Antibody:* Affinity purified rabbit anti-ABCB9 (Cat. No. IHC-00398-T) used at a dilution of 1:500. *Detection:* DAB



**Detection of mouse ABCB9 by immunohistochemistry.**  
*Sample:* FFPE section of mouse teratoma. *Antibody:* Affinity purified rabbit anti-ABCB9 (Cat. No. IHC-00398-T) used at a dilution of 1:100. *Detection:* DAB