

E1B-AP5 IHC Antibody

Rabbit Polyclonal

Antigen Affinity Purified

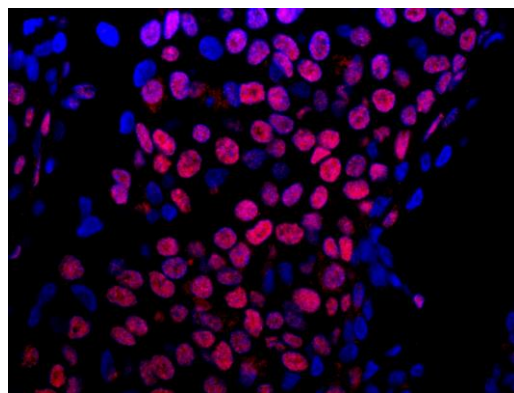
Protein ID NP_008971.2

Catalog No. IHC-00393-T

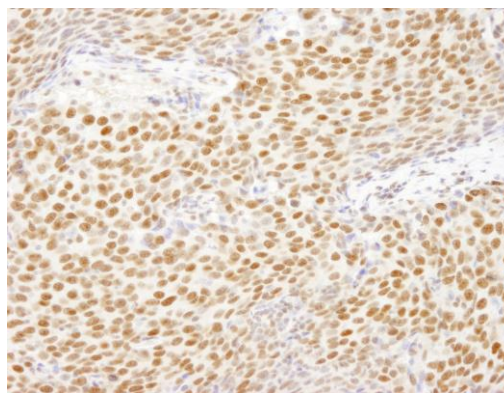
GeneID 11100



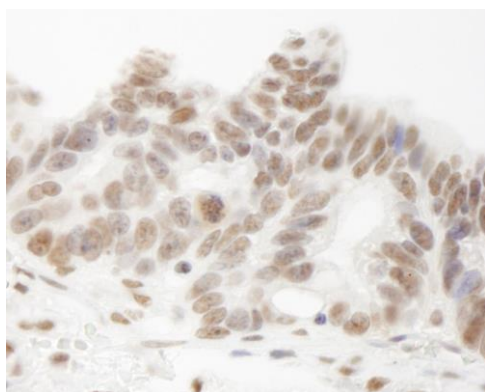
APPLICATIONS	IHC, IHC-IF
SPECIES REACTIVITY	Human, Mouse
AMOUNT	10 µl
CONCENTRATION	100 µg/ml
STORAGE/SHELF LIFE	2 - 8° C / 1 year from date of receipt
PHYSICAL STATE	Liquid
BUFFER	Tris-buffered Saline containing 0.1% BSA and 0.09% Sodium Azide
ISOTYPE	IgG
ORIGIN	USA
PRODUCTION PROCEDURES	<p>Antibody was affinity purified using an epitope specific to E1B-AP5 immobilized on solid support.</p> <p>The epitope recognized by IHC-00393-T maps to a region between residue 50 and 100 of human E1B-55kDa-Associated Protein 5 using the numbering given in entry NP_008971.2 (GeneID 11100).</p> <p>Antibody concentration was determined by extinction coefficient: absorbance at 280 nm of 1.4 equals 1.0 mg of IgG.</p>
APPLICATIONS	<p>Centrifuge tube to remove product from lid. Optimal working dilutions should be determined experimentally by the investigator. Prepare working dilution immediately before use.</p> <p>Immunohistochemistry 1:100 - 1:500</p> <p>Immunofluorescence 1:50 - 1:500 (IHC)</p>
APPLICATION NOTES	<p>Epitope exposure is recommended.</p> <p>Epitope exposure with citrate or tris-EDTA pH9.0 buffer will enhance staining.</p> <p>Likely to work with frozen sections.</p> <p>In some cases, the antibody may be diluted further than indicated.</p>
IHC HUMAN CONTROLS	Breast Carcinoma, Colon Carcinoma, Laryngeal Squamous Cell Carcinoma, Linitis Plastica Stomach Cancer, Non-Small Cell Lung Cancer, Ovarian Carcinoma, Prostate Carcinoma, Skin Basal Cell Carcinoma, Small Cell Lung Cancer, Stomach Adenocarcinoma, Testicular Seminoma
IHC MOUSE CONTROLS	Brain, Testis
ADDITIONAL INFO	<p>https://www.bethyl.com/product/IHC-00393-T</p> <p>Use the link above to view SDS, a current list of citations, and other product specific information.</p>



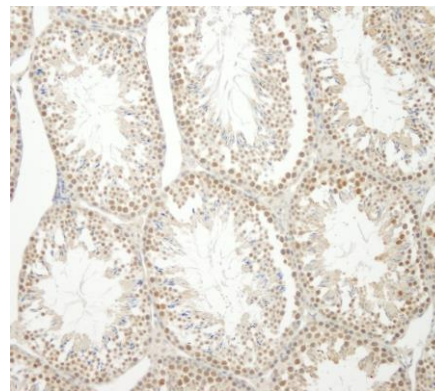
Detection of human E1B-AP5 by immunohistochemistry.
Sample: FFPE section of human breast carcinoma.
Antibody: Affinity purified rabbit anti-E1B-AP5 (Cat. No. IHC-00393-T) used at a dilution of 1:100. *Detection:* Red-fluorescent goat anti-rabbit IgG highly cross-adsorbed Antibody Hilyte Plus™ 555 used at a dilution of 1:100.



Detection of human E1B-AP5 by immunohistochemistry.
Sample: FFPE section of human breast carcinoma.
Antibody: Affinity purified rabbit anti-E1B-AP5 (Cat. No. IHC-00393-T) used at a dilution of 1:100. *Detection:* DAB



Detection of human E1B-AP5 by immunohistochemistry.
Sample: FFPE section of human ovarian carcinoma.
Antibody: Affinity purified rabbit anti-E1B-AP5 (Cat. No. IHC-00393-T) used at a dilution of 1500. *Detection:* DAB



Detection of mouse E1B-AP5 by immunohistochemistry.
Sample: FFPE section of mouse testis. *Antibody:* Affinity purified rabbit anti-E1B-AP5 (Cat. No. IHC-00393-T) used at a dilution of 1:500. *Detection:* DAB