

DHX15 IHC Antibody

Rabbit Polyclonal

Antigen Affinity Purified

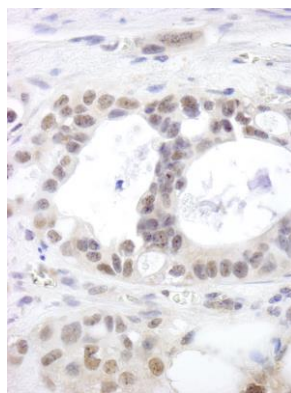
Protein ID O43143

Catalog No. IHC-00390-T

GeneID 1665



APPLICATIONS	IHC
SPECIES REACTIVITY	Human
AMOUNT	10 µl
CONCENTRATION	50 µg/ml
STORAGE/SHELF LIFE	2 – 8° C / 1 year from date of receipt
PHYSICAL STATE	Liquid
BUFFER	Tris-buffered Saline containing 0.1% BSA and 0.09% Sodium Azide
ISOTYPE	IgG
ORIGIN	USA
PRODUCTION PROCEDURES	<p>Antibody was affinity purified using an epitope specific to DHX15 immobilized on solid support.</p> <p>The epitope recognized by IHC-00390-T maps to a region between residues 350 and 400 of human DEAH (Asp-Glu-Ala-His) Box Polypeptide 15 using the numbering given in Swiss-Prot entry O43143 (GeneID 1665).</p> <p>Antibody concentration was determined by extinction coefficient: absorbance at 280 nm of 1.4 equals 1.0 mg of IgG.</p>
APPLICATIONS	<p>Centrifuge tube to remove product from lid. Optimal working dilutions should be determined experimentally by the investigator. Prepare working dilution immediately before use.</p> <p>Immunohistochemistry 1:100 – 1:500</p>
APPLICATION NOTES	<p>Epitope exposure is recommended.</p> <p>Epitope exposure with citrate buffer will enhance staining.</p> <p>Likely to work with frozen sections.</p> <p>In some cases, the antibody may be diluted further than indicated.</p>
IHC HUMAN CONTROLS	Breast Carcinoma, Ovarian Carcinoma, Prostate Carcinoma, Small Cell Lung Cancer
ADDITIONAL INFO	<p>https://www.bethyl.com/product/IHC-00390-T</p> <p>Use the link above to view SDS, a current list of citations, and other product specific information.</p>



Detection of human DHX15 by immunohistochemistry.
Sample: FFPE section of human ovarian tumor. *Antibody:* Affinity purified rabbit anti-DHX15 (Cat. No. IHC-00390-T) used at a dilution of 1:250. *Detection:* DAB