

Phospho RNA Polymerase II (S2) IHC Antibody

Rabbit Polyclonal

Antigen Affinity Purified

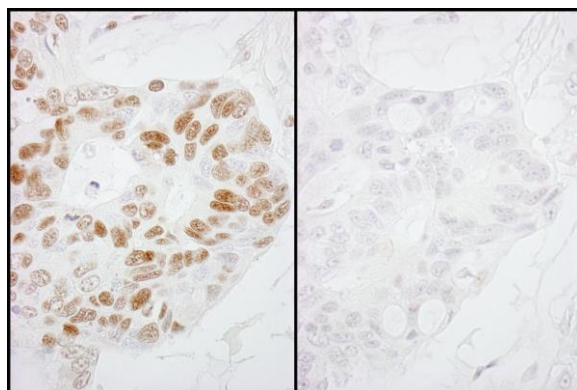
Protein ID NP_000928.1

Catalog No. IHC-00386-T

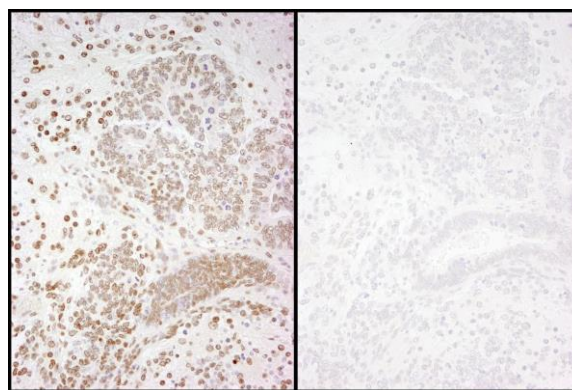
GeneID 5430



APPLICATIONS	IHC
SPECIES REACTIVITY	Human, Mouse
AMOUNT	10 µl
CONCENTRATION	100 µg/ml
STORAGE/SHELF LIFE	2 - 8° C / 1 year from date of receipt
PHYSICAL STATE	Liquid
BUFFER	Tris-buffered Saline containing 0.1% BSA and 0.09% Sodium Azide
ISOTYPE	IgG
ORIGIN	USA
PRODUCTION PROCEDURES	<p>Antibody was affinity purified using an epitope specific to Phospho RNA Polymerase II (S2) immobilized on solid support. Immunogen for IHC-00386-T was a phosphorylated synthetic peptide, which represented a portion of human RNA Polymerase II (GeneID 5430) around serine 2 of the C-terminal repeat YSPTSPS.</p> <p>Antibody concentration was determined by extinction coefficient: absorbance at 280 nm of 1.4 equals 1.0 mg of IgG.</p>
APPLICATIONS	<p>Centrifuge tube to remove product from lid. Optimal working dilutions should be determined experimentally by the investigator. Prepare working dilution immediately before use.</p> <p>Immunohistochemistry 1:100 - 1:500</p>
APPLICATION NOTES	<p>Epitope exposure is recommended.</p> <p>Epitope exposure with citrate buffer will enhance staining.</p> <p>Likely to work with frozen sections.</p>
IHC HUMAN CONTROLS	<p>In some cases, the antibody may be diluted further than indicated.</p> <p>Breast Carcinoma, Colon Carcinoma, Laryngeal Squamous Cell Carcinoma, Non-Small Cell Lung Cancer, Ovarian Carcinoma, Prostate Carcinoma, Small Cell Lung Cancer, Testicular Seminoma</p>
IHC MOUSE CONTROLS	<p>Squamous Cell Carcinoma, Teratoma</p>
ADDITIONAL INFO	<p>https://www.bethyl.com/product/IHC-00386-T</p> <p>Use the link above to view SDS, a current list of citations, and other product specific information.</p>



Detection of human Phospho-RNA Polymerase II (S2) by immunohistochemistry. *Samples:* FFPE serial sections of human ovarian carcinoma. Mock phosphatase treated section (left) or calf intestinal phosphatase-treated section (right) immunostained for Phospho-RNA Polymerase II (S2). *Antibody:* Affinity purified rabbit anti-Phospho-RNA Polymerase II (S2) (Cat. No. IHC-00386-T) used at a dilution of 1:250. *Detection:* DAB



Detection of mouse Phospho-RNA Polymerase II (S2) by immunohistochemistry. *Samples:* FFPE serial sections of mouse teratoma. Mock phosphatase treated section (left) or calf intestinal phosphatase-treated section (right) immunostained for Phospho-RNA Polymerase II (S2). *Antibody:* Affinity purified rabbit anti-Phospho-RNA Polymerase II (S2) (Cat. No. IHC-00386-T) used at a dilution of 1:250. *Detection:* DAB