

p66beta/GATAD2B IHC Antibody

Rabbit Polyclonal

Antigen Affinity Purified

Protein ID NP_065750.1

Catalog No. IHC-00377-T

GeneID 57459



APPLICATIONS	IHC
SPECIES REACTIVITY	Human, Mouse
AMOUNT	10 µl
CONCENTRATION	250 µg/ml
STORAGE/SHELF LIFE	2 – 8° C / 1 year from date of receipt
PHYSICAL STATE	Liquid
BUFFER	Tris-buffered Saline containing 0.1% BSA and 0.09% Sodium Azide
ISOTYPE	IgG
ORIGIN	USA
PRODUCTION PROCEDURES	Antibody was affinity purified using an epitope specific to p66beta/GATAD2B immobilized on solid support.

The epitope recognized by IHC-00377-T maps to a region between residue 50 and 100 of human transcription repressor p66 beta component of the MeCP1 complex (GATA zinc finger domain containing 2B) using the numbering given in entry NP_065750.1 (GeneID 57459).

Antibody concentration was determined by extinction coefficient: absorbance at 280 nm of 1.4 equals 1.0 mg of IgG.

APPLICATIONS Centrifuge tube to remove product from lid. Optimal working dilutions should be determined experimentally by the investigator. Prepare working dilution immediately before use.

Immunohistochemistry 1:100 – 1:500

APPLICATION NOTES Epitope exposure is recommended.

Epitope exposure with citrate buffer will enhance staining.

Likely to work with frozen sections.

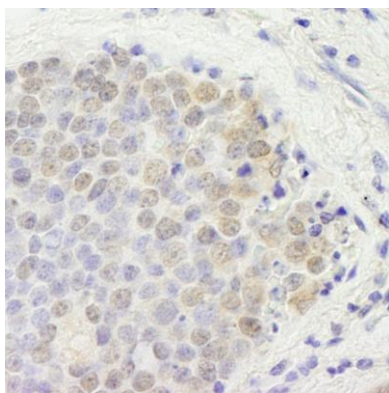
In some cases, the antibody may be diluted further than indicated.

IHC HUMAN CONTROLS Breast Carcinoma, Ewing Sarcoma, Non-Small Cell Lung Cancer, Ovarian Carcinoma, Small Cell Lung Cancer

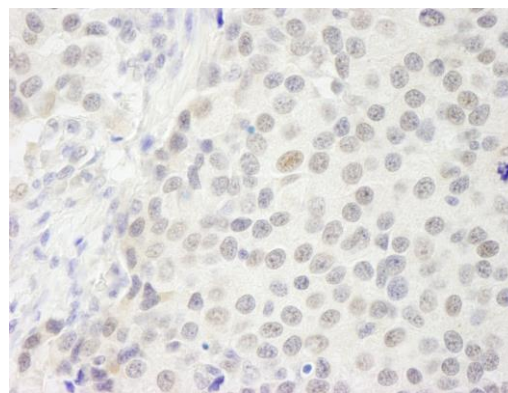
IHC MOUSE CONTROLS Renal Cell Carcinoma, Teratoma

ADDITIONAL INFO <https://www.bethyl.com/product/IHC-00377-T>

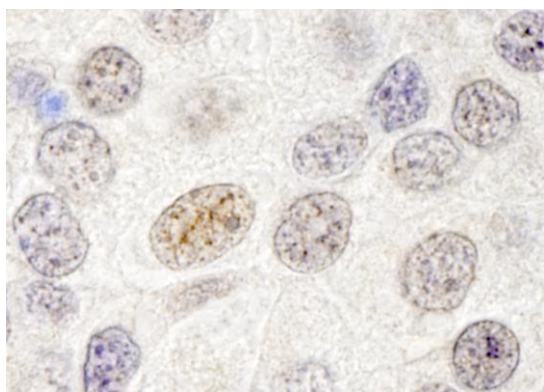
Use the link above to view SDS, a current list of citations, and other product specific information.



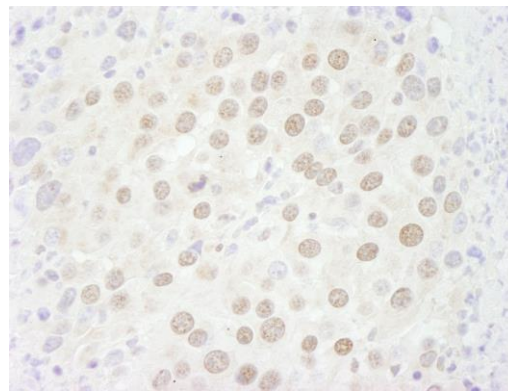
Detection of human p66beta/GATAD2B by immunohistochemistry. *Sample:* FFPE section of human small cell lung cancer. *Antibody:* Affinity purified rabbit anti-p66beta/GATAD2B (Cat. No. IHC-00377-T) used at a dilution of 1:250. *Detection:* DAB



Detection of human p66beta/GATAD2B by immunohistochemistry. *Sample:* FFPE section of human breast carcinoma. *Antibody:* Affinity purified rabbit anti-p66beta/GATAD2B (Cat. No. IHC-00377-T) used at a dilution of 1:250. *Detection:* DAB



Detection of human p66beta/GATAD2B by immunohistochemistry. *Sample:* FFPE section of human breast carcinoma. *Antibody:* Affinity purified rabbit anti-p66beta/GATAD2B (Cat. No. IHC-00377-T) used at a dilution of 1:250. *Detection:* DAB



Detection of mouse p66beta/GATAD2B by immunohistochemistry. *Sample:* FFPE section of mouse renal cell carcinoma. *Antibody:* Affinity purified rabbit anti-p66beta/GATAD2B (Cat. No. IHC-00377-T) used at a dilution of 1:250. *Detection:* DAB