

CDK2 IHC Antibody

Rabbit Polyclonal

Antigen Affinity Purified

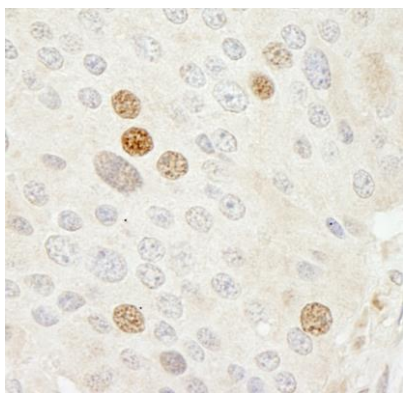
Protein ID NP_001789.2

Catalog No. IHC-00374-T

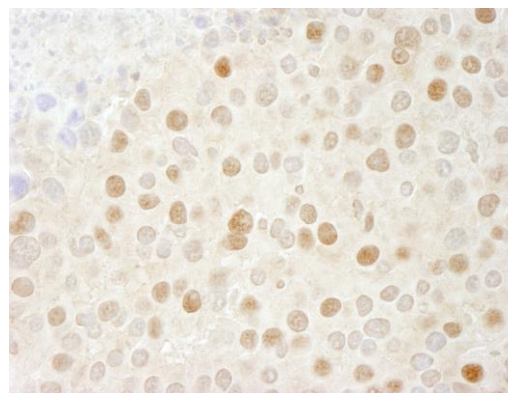
GeneID 1017



APPLICATIONS	IHC
SPECIES REACTIVITY	Human, Mouse
AMOUNT	10 µl
CONCENTRATION	250 µg/ml
STORAGE/SHELF LIFE	2 – 8° C / 1 year from date of receipt
PHYSICAL STATE	Liquid
BUFFER	Tris-buffered Saline containing 0.1% BSA and 0.09% Sodium Azide
ISOTYPE	IgG
ORIGIN	USA
PRODUCTION PROCEDURES	<p>Antibody was affinity purified using an epitope specific to CDK2 immobilized on solid support.</p> <p>The epitope recognized by IHC-00374-T maps to a region between residue 248 and 298 of human cyclin-dependent kinase 2 using the numbering given in entry NP_001789.2 (GeneID 1017).</p> <p>Antibody concentration was determined by extinction coefficient: absorbance at 280 nm of 1.4 equals 1.0 mg of IgG.</p>
APPLICATIONS	<p>Centrifuge tube to remove product from lid. Optimal working dilutions should be determined experimentally by the investigator. Prepare working dilution immediately before use.</p> <p>Immunohistochemistry 1:100 – 1:500</p>
APPLICATION NOTES	<p>Epitope exposure is recommended.</p> <p>Epitope exposure with tris-EDTA pH9.0 buffer will enhance staining.</p> <p>Likely to work with frozen sections.</p> <p>In some cases, the antibody may be diluted further than indicated.</p>
IHC HUMAN CONTROLS	Breast Carcinoma, Colon Carcinoma, Hodgkins Lymphoma, Ovarian Carcinoma, Pancreatic Islet Cell Tumor, Prostate Carcinoma, Stomach Adenocarcinoma
IHC MOUSE CONTROLS	Renal Cell Carcinoma, Teratoma
ADDITIONAL INFO	<p>https://www.bethyl.com/product/IHC-00374-T</p> <p>Use the link above to view SDS, a current list of citations, and other product specific information.</p>



Detection of human CDK2 by immunohistochemistry.
Sample: FFPE section of human pancreatic islet cell tumor.
Antibody: Affinity purified rabbit anti-CDK2 (Cat. No. IHC-00374-T) used at a dilution of 1:250. *Detection:* DAB



Detection of mouse CDK2 by immunohistochemistry.
Sample: FFPE section of mouse renal cell carcinoma
Antibody: Affinity purified rabbit anti-CDK2 (Cat. No. IHC-00374-T) used at a dilution of 1:250. *Detection:* DAB