

WTAP IHC Antibody

Rabbit Polyclonal

Antigen Affinity Purified

Protein ID NP_004897.2

Catalog No. IHC-00368-T

GeneID 9589



APPLICATIONS	IHC, IHC-IF
SPECIES REACTIVITY	Human
AMOUNT	10 µl
CONCENTRATION	250 µg/ml
STORAGE/SHELF LIFE	2 - 8° C / 1 year from date of receipt
PHYSICAL STATE	Liquid
BUFFER	Tris-buffered Saline containing 0.1% BSA and 0.09% Sodium Azide
ISOTYPE	IgG
ORIGIN	USA
PRODUCTION PROCEDURES	Antibody was affinity purified using an epitope specific to WTAP immobilized on solid support.

The epitope recognized by IHC-00368-T maps to a region between residue 346 and 396 of human Wilms tumor 1 associated protein using the numbering given in entry NP_004897.2 (GeneID 9589).

Antibody concentration was determined by extinction coefficient: absorbance at 280 nm of 1.4 equals 1.0 mg of IgG.

APPLICATIONS Centrifuge tube to remove product from lid. Optimal working dilutions should be determined experimentally by the investigator. Prepare working dilution immediately before use.

Immunohistochemistry 1:100 - 1:500

Immunofluorescence 1:50 - 1:500
(IHC)

APPLICATION NOTES Epitope exposure is recommended.

Epitope exposure with citrate buffer will enhance staining.

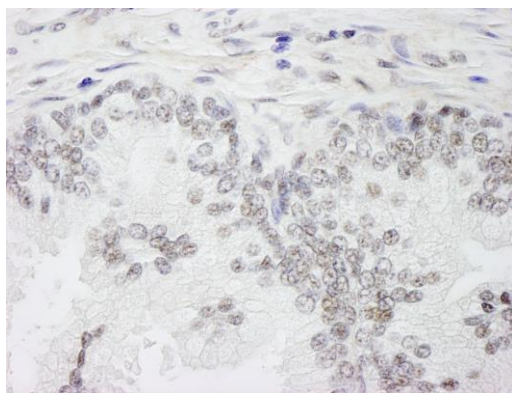
Likely to work with frozen sections.

In some cases, the antibody may be diluted further than indicated.

IHC HUMAN CONTROLS Anaplastic Thyroid Carcinoma, Bladder Cell Carcinoma, Breast Carcinoma, Hodgkins Lymphoma, Ovarian Carcinoma, Pancreatic Islet Cell Tumor, Prostate Carcinoma, Stomach Adenocarcinoma

ADDITIONAL INFO <https://www.bethyl.com/product/IHC-00368-T>

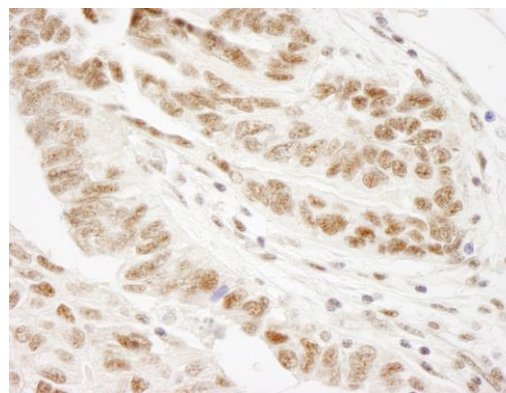
Use the link above to view SDS, a current list of citations, and other product specific information.

**Detection of human WTAP by immunohistochemistry.**

Sample: FFPE section of human prostate carcinoma.

Antibody: Affinity purified rabbit anti-WTAP (Cat. No.

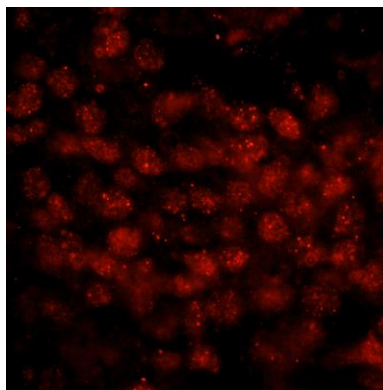
IHC-00368-T) used at a dilution of 1:250. *Detection:* DAB

**Detection of human WTAP by immunohistochemistry.**

Sample: FFPE section of human ovarian carcinoma.

Antibody: Affinity purified rabbit anti-WTAP (Cat. No.

IHC-00368-T) used at a dilution of 1:250. *Detection:* DAB

**Detection of human WTAP by immunohistochemistry.**

Sample: FFPE section of human breast carcinoma.

Antibody: Affinity purified rabbit anti-WTAP (Cat. No.

IHC-00368-T) used at a dilution of 1:100. *Detection:* Red-

fluorescent goat anti-rabbit IgG highly cross-adsorbed

Antibody used at a dilution of 1:100.