

NUP153 IHC Antibody

Rabbit Polyclonal

Antigen Affinity Purified

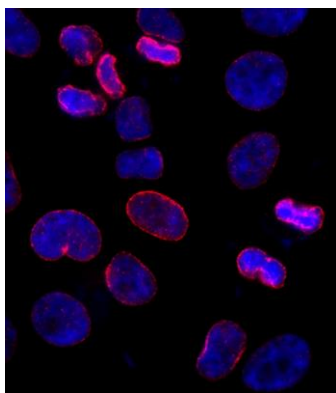
Protein ID NP_005115.2

Catalog No. IHC-00366-T

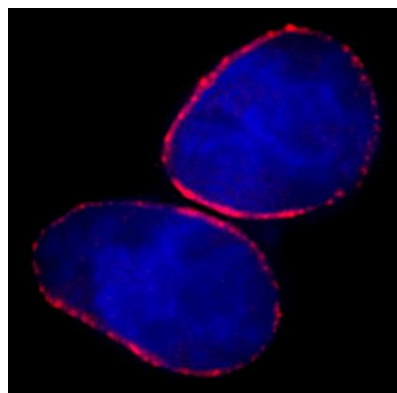
GeneID 9972



| | |
|------------------------------|--|
| APPLICATIONS | ICC-IF |
| SPECIES REACTIVITY | Human |
| AMOUNT | 10 µl |
| CONCENTRATION | 250 µg/ml |
| STORAGE/SHELF LIFE | 2 – 8° C / 1 year from date of receipt |
| PHYSICAL STATE | Liquid |
| BUFFER | Tris-buffered Saline containing 0.1% BSA and 0.09% Sodium Azide |
| ISOTYPE | IgG |
| ORIGIN | USA |
| PRODUCTION PROCEDURES | <p>Antibody was affinity purified using an epitope specific to NUP153 immobilized on solid support.</p> <p>The epitope recognized by IHC-00366-T maps to a region between residue 50 and 100 of human nucleoporin 153kDa using the numbering given in entry NP_005115.2 (GeneID 9972).</p> <p>Antibody concentration was determined by extinction coefficient: absorbance at 280 nm of 1.4 equals 1.0 mg of IgG.</p> |
| APPLICATIONS | <p>Centrifuge tube to remove product from lid. Optimal working dilutions should be determined experimentally by the investigator. Prepare working dilution immediately before use.</p> <p>Immunofluorescence 1:100 – 1:500 (ICC)</p> |
| APPLICATION NOTES | <p>Formaldehyde-Fixed Cells 1:100 – 1:500: Permeabilization with Triton-X 100 is recommended.</p> <p>Acetone fixation is not recommended.</p> |
| IHC HUMAN CONTROLS | HeLa Cells |
| ADDITIONAL INFO | <p>https://www.bethyl.com/product/IHC-00366-T Use the link above to view SDS, a current list of citations, and other product specific information.</p> |

**Detection of human NUP153 by immunocytochemistry.**

Sample: NBF-fixed asynchronous HeLa cells. *Antibody:* Affinity purified rabbit anti-NUP153 (Cat. No. IHC-00366-T) used at a dilution of 1:250. *Detection:* Red-fluorescent goat anti-rabbit IgG highly cross-adsorbed Antibody Hilyte Plus™ 555 used at a dilution of 1:100.

**Detection of human NUP153 by immunocytochemistry.**

Sample: NBF-fixed asynchronous HeLa cells. *Antibody:* Affinity purified rabbit anti-NUP153 (Cat. No. IHC-00366-T) used at a dilution of 1:250. *Detection:* Red-fluorescent goat anti-rabbit IgG highly cross-adsorbed Antibody used at a dilution of 1:100.