

FKBP5/FKBP51 IHC Antibody

Rabbit Polyclonal

Antigen Affinity Purified

Protein ID NP_004108.1

Catalog No. IHC-00289-T

GeneID 2289



APPLICATIONS	IHC
SPECIES REACTIVITY	Human
AMOUNT	10 µl
CONCENTRATION	100 µg/ml
STORAGE/SHELF LIFE	2 – 8° C / 1 year from date of receipt
PHYSICAL STATE	Liquid
BUFFER	Tris-buffered Saline containing 0.1% BSA and 0.09% Sodium Azide
ISOTYPE	IgG
ORIGIN	USA
PRODUCTION PROCEDURES	Antibody was affinity purified using an epitope specific to FKBP5/FKBP51 immobilized on solid support.

The epitope recognized by IHC-00289-T maps to a region between residue 407 and 457 of human FK506 binding protein 5 (51 kDa FK506-binding protein) using the numbering given in entry NP_004108.1 (GeneID 2289).

Antibody concentration was determined by extinction coefficient: absorbance at 280 nm of 1.4 equals 1.0 mg of IgG.

APPLICATIONS Centrifuge tube to remove product from lid. Optimal working dilutions should be determined experimentally by the investigator. Prepare working dilution immediately before use.

Immunohistochemistry 1:100 – 1:500

APPLICATION NOTES Epitope exposure is recommended.

Epitope exposure with citrate buffer will enhance staining.

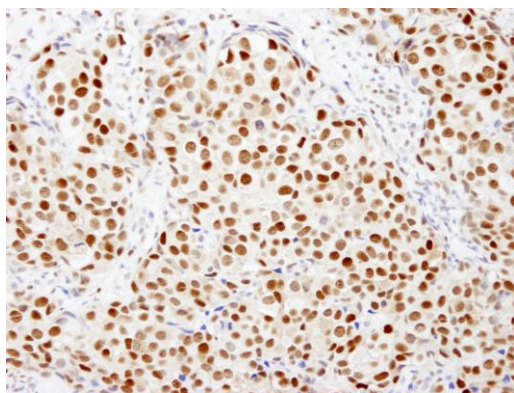
Likely to work with frozen sections.

In some cases, the antibody may be diluted further than indicated.

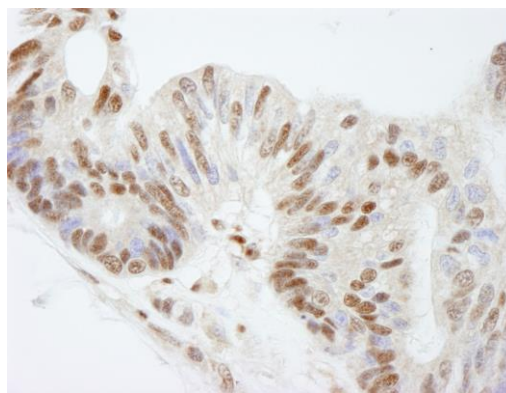
IHC HUMAN CONTROLS Breast Carcinoma, Colon Carcinoma, Ovarian Carcinoma, Prostate Carcinoma, Testicular Seminoma

ADDITIONAL INFO <https://www.bethyl.com/product/IHC-00289-T>

Use the link above to view SDS, a current list of citations, and other product specific information.



Detection of human FKBP5/FKBP51 by immunohistochemistry. *Sample:* FFPE section of human breast carcinoma. *Antibody:* Affinity purified rabbit anti-FKBP5/FKBP51 (Cat. No. IHC-00289-T) used at a dilution of 1:500. *Detection:* DAB



Detection of human FKBP5/FKBP51 by immunohistochemistry. *Sample:* FFPE section of human ovarian carcinoma. *Antibody:* Affinity purified rabbit anti-FKBP5/FKBP51 (Cat. No. IHC-00289-T) used at a dilution of 1:500. *Detection:* DAB