

GPRC5A Antibody

Rabbit Polyclonal

Antigen Affinity Purified

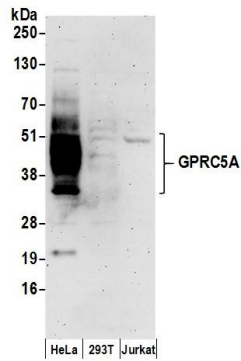
Protein ID NP_003970.1

Catalog No. A304-441A-T

GeneID 9052



APPLICATIONS	WB, IP
SPECIES REACTIVITY	Human
AMOUNT	20 µl (2 blots)
CONCENTRATION	100 µg/ml
STORAGE/SHELF LIFE	2 - 8° C / 1 year from date of receipt
PHYSICAL STATE	Liquid
BUFFER	Tris-buffered Saline containing 0.1% BSA and 0.09% Sodium Azide
ISOTYPE	IgG
ORIGIN	USA
PRODUCTION PROCEDURES	Antibody was affinity purified using an epitope specific to GPRC5A immobilized on solid support. The epitope recognized by A304-441A-T maps to a region between residue 307 to 357 of human G Protein-Coupled Receptor, Family C, Group 5, Member A using the numbering given in entry NP_003970. (GeneID 9052).
APPLICATIONS	Centrifuge tube to remove product from lid. Optimal working dilutions should be determined experimentally by the investigator. Prepare working dilution immediately before use. Western Blot 1:1000 Immunoprecipitation The antibody contained within A304-441A-T has been qualified for use in immunoprecipitation; however, we recommend using the alternative formulation of this antibody found as product A304-441A.
APPLICATION NOTES	Western blot of immunoprecipitates performed using Normal Pig Serum (Cat. No. S100-020), Goat anti-Rabbit Light Chain HRP Conjugate (Cat. No. A120-113P) and 4-20% SDS-PAGE (link to IP-western blot protocol in Additional Info section below). Western blot of lysates performed using standard western blot reagents and 4-20% SDS-PAGE.
ADDITIONAL INFO	https://www.bethyl.com/product/A304-441A-T Use the link above to view SDS, a current list of citations, and other product specific information. IP-western blot protocol: https://www.bethyl.com/content/protocol_IP_WB



Detection of human GPRC5A by western blot. *Samples:* Whole cell lysate (50 μ g) prepared using NETN buffer from HeLa, HEK293T, and Jurkat cells. *Antibody:* Affinity purified rabbit anti-GPRC5A antibody A304-441A-T used at 1:1000. *Detection:* Chemiluminescence with an exposure time of 3 minutes.