

CELSR1 Antibody

Rabbit Polyclonal

Antigen Affinity Purified

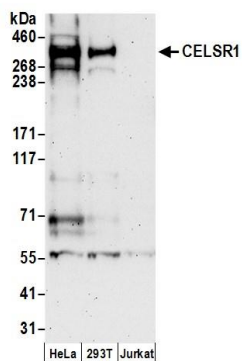
Protein ID NP_055061.1

Catalog No. A304-433A-M

GeneID 9620



| | |
|------------------------------|---|
| APPLICATIONS | WB, IP |
| SPECIES REACTIVITY | Human |
| AMOUNT | 100 µl (10 blots) |
| CONCENTRATION | 400 µg/ml |
| STORAGE/SHELF LIFE | 2 - 8° C / 1 year from date of receipt |
| PHYSICAL STATE | Liquid |
| BUFFER | Tris-buffered Saline containing 0.1% BSA and 0.09% Sodium Azide |
| ISOTYPE | IgG |
| ORIGIN | USA |
| PRODUCTION PROCEDURES | Antibody was affinity purified using an epitope specific to CELSR1 immobilized on solid support. The epitope recognized by A304-433A-M maps to a region between residue 2964 to 3014 of human Cadherin, EGF LAG Seven-Pass G-Type Receptor 1 using the numbering given in entry NP_055061.1 (GeneID 9620). |
| APPLICATIONS | Centrifuge tube to remove product from lid. Optimal working dilutions should be determined experimentally by the investigator. Prepare working dilution immediately before use. Western Blot 1:1000 Immunoprecipitation The antibody contained within A304-433A-M has been qualified for use in immunoprecipitation; however, we recommend using the alternative formulation of this antibody found as product A304-433A. |
| APPLICATION NOTES | Western blot of immunoprecipitates performed using Normal Pig Serum (Cat. No. S100-020), Goat anti-Rabbit Light Chain HRP Conjugate (Cat. No. A120-113P) and 3-8% SDS-PAGE (link to IP-western blot protocol in Additional Info section below). Western blot of lysates performed using standard western blot reagents and 3-8% SDS-PAGE. |
| ADDITIONAL INFO | https://www.bethyl.com/product/A304-433A-M Use the link above to view SDS, a current list of citations, and other product specific information. IP-western blot protocol: https://www.bethyl.com/content/protocol_IP_WB |



Detection of human CELSR1 by western blot. *Samples:* Whole cell lysate (50 μ g) prepared using NETN buffer from HeLa, HEK293T, and Jurkat cells. *Antibody:* Affinity purified rabbit anti-CELSR1 antibody A304-433A-M used at 1:1000. *Detection:* Chemiluminescence with an exposure time of 3 minutes.