

PAF Antibody

Rabbit Polyclonal

Antigen Affinity Purified

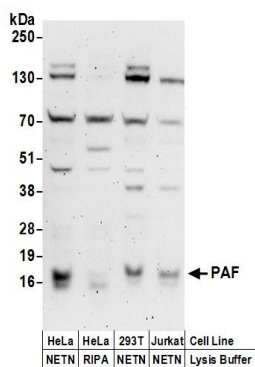
Catalog No. A304-374A-T

Protein ID NP_055551.1

GeneID 9768



APPLICATIONS	WB
SPECIES REACTIVITY	Human
AMOUNT	20 µl (2 blots)
CONCENTRATION	100 µg/ml
STORAGE/SHELF LIFE	2 - 8° C / 1 year from date of receipt
PHYSICAL STATE	Liquid
BUFFER	Tris-buffered Saline containing 0.1% BSA and 0.09% Sodium Azide
ISOTYPE	IgG
ORIGIN	USA
PRODUCTION PROCEDURES	Antibody was affinity purified using an epitope specific to PAF immobilized on solid support. The epitope recognized by A304-374A-T maps to a region between residue 61 to 111 of human PCNA-Associated Factor using the numbering given in entry NP_055551.1 (GeneID 9768).
APPLICATIONS	Centrifuge tube to remove product from lid. Optimal working dilutions should be determined experimentally by the investigator. Prepare working dilution immediately before use. Western Blot 1:1000 Immunoprecipitation Not recommended
APPLICATION NOTES	Western blot of lysates performed using standard western blot reagents and 4-12% SDS-PAGE.
ADDITIONAL INFO	https://www.bethyl.com/product/A304-374A-T Use the link above to view SDS, a current list of citations, and other product specific information.



Detection of human PAF by western blot. *Samples:* Whole cell lysate (50 μ g) prepared using NETN or RIPA buffer from HeLa, HEK293T, and Jurkat cells. *Antibody:* Affinity purified rabbit anti-PAF antibody A304-374A-T used at 1:1000. *Detection:* Chemiluminescence with an exposure time of 3 minutes.