

RRP8 Antibody

Rabbit Polyclonal

Antigen Affinity Purified

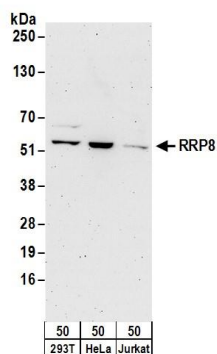
Protein ID NP_056139.1

Catalog No. A304-201A-M

GeneID 23378



APPLICATIONS	WB
SPECIES REACTIVITY	Human
AMOUNT	100 µl (10 blots)
CONCENTRATION	100 µg/ml
STORAGE/SHELF LIFE	2 - 8° C / 1 year from date of receipt
PHYSICAL STATE	Liquid
BUFFER	Tris-buffered Saline containing 0.1% BSA and 0.09% Sodium Azide
ISOTYPE	IgG
ORIGIN	USA
PRODUCTION PROCEDURES	Antibody was affinity purified using an epitope specific to RRP8 immobilized on solid support. The epitope recognized by A304-201A-M maps to a region between residue 1 to 50 of human Ribosomal RNA Processing 8 using the numbering given in entry NP_056139.1 (GeneID 23378).
APPLICATIONS	Centrifuge tube to remove product from lid. Optimal working dilutions should be determined experimentally by the investigator. Prepare working dilution immediately before use. Western Blot 1:1000 Immunoprecipitation Not recommended
APPLICATION NOTES	Western blot of lysates performed using standard western blot reagents and 4-20% SDS-PAGE.
ADDITIONAL INFO	https://www.bethyl.com/product/A304-201A-M Use the link above to view SDS, a current list of citations, and other product specific information.



Detection of human RRP8 by western blot. *Samples:* Whole cell lysate (50 µg) from 293T, HeLa, and Jurkat cells. *Antibody:* Affinity purified rabbit anti-RRP8 antibody A304-201A-M used at 1:1000. *Detection:* Chemiluminescence with an exposure time of 3 minutes.