

PRMT10 Antibody

Rabbit Polyclonal

Antigen Affinity Purified

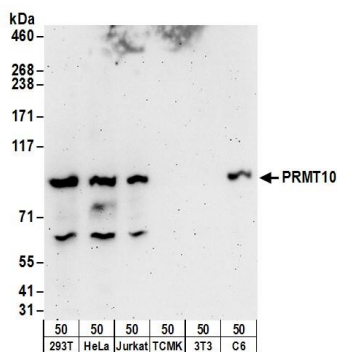
Catalog No. A304-190A-T

Protein ID NP_612373.2

GeneID 90826



APPLICATIONS	WB, IP
SPECIES REACTIVITY	Human, Rat
AMOUNT	20 µl (2 blots)
CONCENTRATION	400 µg/ml
STORAGE/SHELF LIFE	2 - 8° C / 1 year from date of receipt
PHYSICAL STATE	Liquid
BUFFER	Tris-buffered Saline containing 0.1% BSA and 0.09% Sodium Azide
ISOTYPE	IgG
ORIGIN	USA
PRODUCTION PROCEDURES	Antibody was affinity purified using an epitope specific to PRMT10 immobilized on solid support. The epitope recognized by A304-190A-T maps to a region between residue 795 to 845 of human Protein Arginine Methyltransferase 10 using the numbering given in entry NP_612373.2 (GeneID 90826).
APPLICATIONS	Centrifuge tube to remove product from lid. Optimal working dilutions should be determined experimentally by the investigator. Prepare working dilution immediately before use. Western Blot 1:1000 Immunoprecipitation The antibody contained within A304-190A-T has been qualified for use in immunoprecipitation; however, we recommend using the alternative formulation of this antibody found as product A304-190A.
APPLICATION NOTES	Western blot of immunoprecipitates performed using Normal Pig Serum (Cat. No. S100-020), Goat anti-Rabbit Light Chain HRP Conjugate (Cat. No. A120-113P) and 4-8% SDS-PAGE (link to IP-western blot protocol in Additional Info section below). Western blot of lysates performed using standard western blot reagents and 4-8% SDS-PAGE.
ADDITIONAL INFO	https://www.bethyl.com/product/A304-190A-T Use the link above to view SDS, a current list of citations, and other product specific information. IP-western blot protocol: https://www.bethyl.com/content/protocol_IP_WB

**Detection of human and rat PRMT10 by western blot.**

Samples: Whole cell lysate (50 µg) from 293T, HeLa, Jurkat, mouse TCMK-1, mouse NIH 3T3, and rat C6 cells.

Antibody: Affinity purified rabbit anti-PRMT10 antibody A304-190A-T used at 1:1000. *Detection:*

Chemiluminescence with an exposure time of 3 minutes.