

# GAS2L3 Antibody

Rabbit Polyclonal

Antigen Affinity Purified

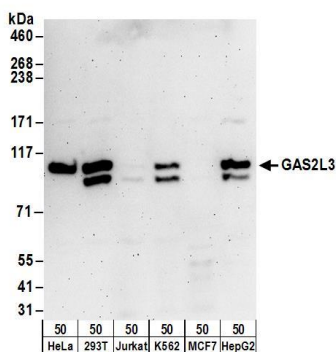
Protein ID NP\_777602.1

Catalog No. A304-151A-M

GeneID 283431



<b>APPLICATIONS</b>	WB
<b>SPECIES REACTIVITY</b>	Human
<b>PRESUMED REACTIVITY</b>	Based on 100% sequence identity, this antibody is predicted to react with Mouse
<b>AMOUNT</b>	100 µl (10 blots)
<b>CONCENTRATION</b>	100 µg/ml
<b>STORAGE/SHELF LIFE</b>	2 - 8° C / 1 year from date of receipt
<b>PHYSICAL STATE</b>	Liquid
<b>BUFFER</b>	Tris-buffered Saline containing 0.1% BSA and 0.09% Sodium Azide
<b>ISOTYPE</b>	IgG
<b>ORIGIN</b>	USA
<b>PRODUCTION PROCEDURES</b>	Antibody was affinity purified using an epitope specific to GAS2L3 immobilized on solid support.  The epitope recognized by A304-151A-M maps to a region between residue 1 to 50 of human Growth Arrest-Specific 2 Like 3 using the numbering given in entry NP_777602.1 (GeneID 283431).
<b>APPLICATIONS</b>	Centrifuge tube to remove product from lid. Optimal working dilutions should be determined experimentally by the investigator. Prepare working dilution immediately before use.  Western Blot                      1:1000  Immunoprecipitation          Not recommended
<b>APPLICATION NOTES</b>	Western blot of lysates performed using standard western blot reagents and 4-8% SDS-PAGE.
<b>ADDITIONAL INFO</b>	<a href="https://www.bethyl.com/product/A304-151A-M">https://www.bethyl.com/product/A304-151A-M</a> Use the link above to view SDS, a current list of citations, and other product specific information.



**Detection of human GAS2L3 by western blot.** *Samples:* Whole cell lysate (50 µg) from HeLa, HEK293T, Jurkat, K-562, MCF-7, and Hep G2 cells. *Antibody:* Affinity purified rabbit anti-GAS2L3 antibody A304-151A-M used at 1:1000. *Detection:* Chemiluminescence with an exposure time of 3 minutes.