

FXR2 Antibody

Rabbit Polyclonal

Antigen Affinity Purified

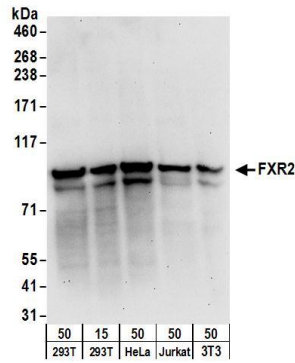
Protein ID NP_004851.2

Catalog No. A303-894A-T

GeneID 9513



APPLICATIONS	WB, IP
SPECIES REACTIVITY	Human, Mouse
AMOUNT	20 µl (2 blots)
CONCENTRATION	100 µg/ml
STORAGE/SHELF LIFE	2 - 8° C / 1 year from date of receipt
PHYSICAL STATE	Liquid
BUFFER	Tris-buffered Saline containing 0.1% BSA and 0.09% Sodium Azide
ISOTYPE	IgG
ORIGIN	USA
PRODUCTION PROCEDURES	<p>Antibody was affinity purified using an epitope specific to FXR2 immobilized on solid support.</p> <p>The epitope recognized by A303-894A-T maps to a region between residue 637 and 673 of human Fragile X Mental Retardation, Autosomal Homolog 2 using the numbering given in entry NP_004851.2 (GeneID 9513).</p>
APPLICATIONS	<p>Centrifuge tube to remove product from lid. Optimal working dilutions should be determined experimentally by the investigator. Prepare working dilution immediately before use.</p> <p>Western Blot 1:1000</p> <p>Immunoprecipitation The antibody contained within A303-894A-T has been qualified for use in immunoprecipitation; however, we recommend using the alternative formulation of this antibody found as product A303-894A.</p>
APPLICATION NOTES	<p>Western blot of immunoprecipitates performed using Normal Pig Serum (Cat. No. S100-020), Goat anti-Rabbit Light Chain HRP Conjugate (Cat. No. A120-113P) and 4-8% SDS-PAGE (link to IP-western blot protocol in Additional Info section below).</p> <p>Western blot of lysates performed using standard western blot reagents and 4-8% SDS-PAGE.</p>
ADDITIONAL INFO	<p>https://www.bethyl.com/product/A303-894A-T</p> <p>Use the link above to view SDS, a current list of citations, and other product specific information.</p> <p>IP-western blot protocol: https://www.bethyl.com/content/protocol_IP_WB</p>



Detection of human and mouse FXR2 by western blot.

Samples: Whole cell lysate from HEK293T (15 and 50 µg), HeLa (50 µg), Jurkat (50 µg), and mouse NIH 3T3 (50 µg) cells. *Antibody:* Affinity purified rabbit anti-FXR2 antibody A303-894A-T used at 1:1000. *Detection:* Chemiluminescence with an exposure time of 30 seconds.