

# FXR2 Antibody

Rabbit Polyclonal

Antigen Affinity Purified

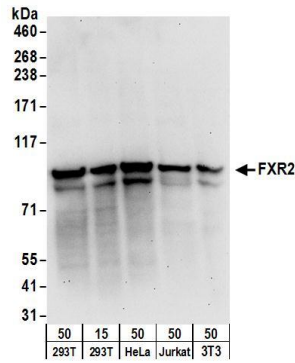
Protein ID NP\_004851.2

Catalog No. A303-894A-M

GeneID 9513



<b>APPLICATIONS</b>	WB, IP
<b>SPECIES REACTIVITY</b>	Human, Mouse
<b>AMOUNT</b>	100 µl (10 blots)
<b>CONCENTRATION</b>	100 µg/ml
<b>STORAGE/SHELF LIFE</b>	2 - 8° C / 1 year from date of receipt
<b>PHYSICAL STATE</b>	Liquid
<b>BUFFER</b>	Tris-buffered Saline containing 0.1% BSA and 0.09% Sodium Azide
<b>ISOTYPE</b>	IgG
<b>ORIGIN</b>	USA
<b>PRODUCTION PROCEDURES</b>	<p>Antibody was affinity purified using an epitope specific to FXR2 immobilized on solid support.</p> <p>The epitope recognized by A303-894A-M maps to a region between residue 637 and 673 of human Fragile X Mental Retardation, Autosomal Homolog 2 using the numbering given in entry NP_004851.2 (GeneID 9513).</p>
<b>APPLICATIONS</b>	<p>Centrifuge tube to remove product from lid. Optimal working dilutions should be determined experimentally by the investigator. Prepare working dilution immediately before use.</p> <p>Western Blot 1:1000</p> <p>Immunoprecipitation The antibody contained within A303-894A-M has been qualified for use in immunoprecipitation; however, we recommend using the alternative formulation of this antibody found as product A303-894A.</p>
<b>APPLICATION NOTES</b>	<p>Western blot of immunoprecipitates performed using Normal Pig Serum (Cat. No. S100-020), Goat anti-Rabbit Light Chain HRP Conjugate (Cat. No. A120-113P) and 4-8% SDS-PAGE (link to IP-western blot protocol in Additional Info section below).</p> <p>Western blot of lysates performed using standard western blot reagents and 4-8% SDS-PAGE.</p>
<b>ADDITIONAL INFO</b>	<p><a href="https://www.bethyl.com/product/A303-894A-M">https://www.bethyl.com/product/A303-894A-M</a></p> <p>Use the link above to view SDS, a current list of citations, and other product specific information.</p> <p>IP-western blot protocol: <a href="https://www.bethyl.com/content/protocol_IP_WB">https://www.bethyl.com/content/protocol_IP_WB</a></p>



**Detection of human and mouse FXR2 by western blot.**

*Samples:* Whole cell lysate from HEK293T (15 and 50 µg), HeLa (50 µg), Jurkat (50 µg), and mouse NIH 3T3 (50 µg) cells. *Antibody:* Affinity purified rabbit anti-FXR2 antibody A303-894A-M used at 1:1000. *Detection:* Chemiluminescence with an exposure time of 30 seconds.