

NOP14 Antibody

Rabbit Polyclonal

Antigen Affinity Purified

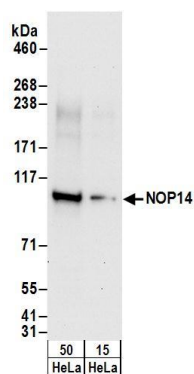
Catalog No. A303-868A-M

Protein ID NP_003694.1

GeneID 8602



| | |
|------------------------------|--|
| APPLICATIONS | WB |
| SPECIES REACTIVITY | Human |
| AMOUNT | 100 µl (10 blots) |
| CONCENTRATION | 100 µg/ml |
| STORAGE/SHELF LIFE | 2 - 8° C / 1 year from date of receipt |
| PHYSICAL STATE | Liquid |
| BUFFER | Tris-buffered Saline containing 0.1% BSA and 0.09% Sodium Azide |
| ISOTYPE | IgG |
| ORIGIN | USA |
| PRODUCTION PROCEDURES | Antibody was affinity purified using an epitope specific to NOP14 immobilized on solid support. The epitope recognized by A303-868A-M maps to a region between residue 50 and 100 of human Nucleolar Complex Protein 14 using the numbering given in entry NP_003694.1 (GeneID 8602). |
| APPLICATIONS | Centrifuge tube to remove product from lid. Optimal working dilutions should be determined experimentally by the investigator. Prepare working dilution immediately before use. Western Blot 1:1000 Immunoprecipitation Not recommended |
| APPLICATION NOTES | Western blot of lysates performed using standard western blot reagents and 4-8% SDS-PAGE. |
| ADDITIONAL INFO | https://www.bethyl.com/product/A303-868A-M Use the link above to view SDS, a current list of citations, and other product specific information. |



Detection of human NOP14 by western blot. *Samples:* Whole cell lysate (15 and 50 µg) from HeLa cells. *Antibody:* Affinity purified rabbit anti-NOP14 antibody A303-868A-M used at 1:1000. *Detection:* Chemiluminescence with an exposure time of 30 seconds.