

SAMHD1 Antibody

Rabbit Polyclonal

Antigen Affinity Purified

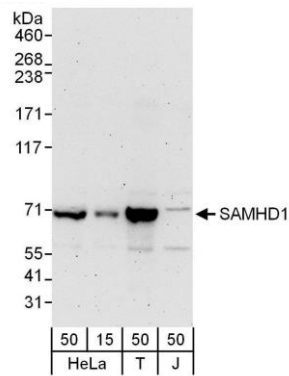
Protein ID NP_056289.2

Catalog No. A303-690A-T

GeneID 25939



APPLICATIONS	WB, IP, IHC
SPECIES REACTIVITY	Human
AMOUNT	20 µl (2 blots)
CONCENTRATION	100 µg/ml
STORAGE/SHELF LIFE	2 - 8° C / 1 year from date of receipt
PHYSICAL STATE	Liquid
BUFFER	Tris-buffered Saline containing 0.1% BSA and 0.09% Sodium Azide
ISOTYPE	IgG
ORIGIN	USA
PRODUCTION PROCEDURES	<p>Antibody was affinity purified using an epitope specific to SAMHD1 immobilized on solid support.</p> <p>The epitope recognized by A303-690A-T maps to a region between residue 450 and 500 of human SAM Domain and HD Domain 1 using the numbering given in entry NP_056289.2 (GeneID 25939).</p>
APPLICATIONS	<p>Centrifuge tube to remove product from lid. Optimal working dilutions should be determined experimentally by the investigator. Prepare working dilution immediately before use.</p> <p>Western Blot 1:1000</p> <p>Immunoprecipitation The antibody contained within A303-690A-T has been qualified for use in immunoprecipitation; however, we recommend using the alternative formulation of this antibody found as product A303-690A.</p> <p>Immunohistochemistry 1:50 - 1:500. Epitope retrieval with citrate buffer pH 6.0 is recommended for FFPE tissue sections.</p>
APPLICATION NOTES	<p>Western blot of immunoprecipitates performed using Normal Pig Serum (Cat. No. S100-020), Goat anti-Rabbit Light Chain HRP Conjugate (Cat. No. A120-113P) and 4-8% SDS-PAGE (link to IP-western blot protocol in Additional Info section below).</p> <p>Western blot of lysates performed using standard western blot reagents and 4-8% SDS-PAGE.</p>
ADDITIONAL INFO	<p>https://www.bethyl.com/product/A303-690A-T</p> <p>Use the link above to view SDS, a current list of citations, and other product specific information.</p> <p>IP-western blot protocol: https://www.bethyl.com/content/protocol_IP_WB</p>



Detection of human SAMHD1 by western blot. *Samples:* Whole cell lysate from HeLa (15 and 50 µg), HEK293T (T; 50 µg) and Jurkat (J; 50 µg) cells. *Antibody:* Affinity purified rabbit anti-SAMHD1 antibody A303-690A-T used at 1:1000. *Detection:* Chemiluminescence with an exposure time of 3 minutes.