

Mel-18 Antibody

Rabbit Polyclonal

Antigen Affinity Purified

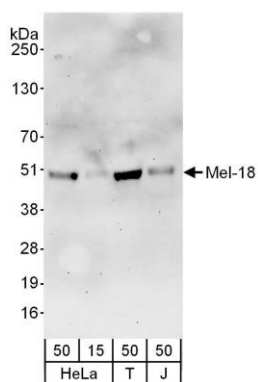
Catalog No. A303-580A-T

Protein ID NP_009075.1

GeneID 7703



APPLICATIONS	WB
SPECIES REACTIVITY	Human
AMOUNT	20 µl (2 blots)
CONCENTRATION	500 µg/ml
STORAGE/SHELF LIFE	2 - 8° C / 1 year from date of receipt
PHYSICAL STATE	Liquid
BUFFER	Tris-buffered Saline containing 0.1% BSA and 0.09% Sodium Azide
ISOTYPE	IgG
ORIGIN	USA
PRODUCTION PROCEDURES	Antibody was affinity purified using an epitope specific to Mel-18 immobilized on solid support. The epitope recognized by A303-580A-T maps to a region between residue 125 and 175 of human DNA-binding Protein Mel-18 using the numbering given in entry NP_009075.1 (GeneID 7703).
APPLICATIONS	Centrifuge tube to remove product from lid. Optimal working dilutions should be determined experimentally by the investigator. Prepare working dilution immediately before use. Western Blot 1:1000 Immunoprecipitation Not recommended
APPLICATION NOTES	Western blot of lysates performed using standard western blot reagents and 4-20% SDS-PAGE.
ADDITIONAL INFO	https://www.bethyl.com/product/A303-580A-T Use the link above to view SDS, a current list of citations, and other product specific information.



Detection of human Mel-18 by western blot. *Samples:* Whole cell lysate from HeLa (15 and 50 µg), HEK293T (T; 50 µg) and Jurkat (J; 50 µg) cells. *Antibody:* Affinity purified rabbit anti-Mel-18 antibody A303-580A-T used at 1:1000. *Detection:* Chemiluminescence with an exposure time of 3 minutes.