

GR Antibody

Rabbit Polyclonal

Antigen Affinity Purified

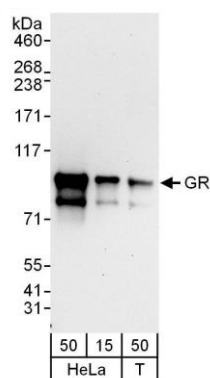
Protein ID NP_000167.1

Catalog No. A303-491A-T

GeneID 2908



APPLICATIONS	WB, IP, IHC, ChIP-Seq
SPECIES REACTIVITY	Human
PRESUMED REACTIVITY	Based on 100% sequence identity, this antibody is predicted to react with Sheep
AMOUNT	20 µl (2 blots)
CONCENTRATION	40 µg/ml
STORAGE/SHELF LIFE	2 - 8° C / 1 year from date of receipt
PHYSICAL STATE	Liquid
BUFFER	Tris-buffered Saline containing 0.1% BSA and 0.09% Sodium Azide
ISOTYPE	IgG
ORIGIN	USA
PRODUCTION PROCEDURES	Antibody was affinity purified using an epitope specific to GR immobilized on solid support. The epitope recognized by A303-491A-T maps to a region between residue 150 and 200 of human Glucocorticoid Receptor using the numbering given in entry NP_000167.1 (GeneID 2908).
APPLICATIONS	Centrifuge tube to remove product from lid. Optimal working dilutions should be determined experimentally by the investigator. Prepare working dilution immediately before use. Western Blot 1:1000 Immunoprecipitation The antibody contained within A303-491A-T has been qualified for use in immunoprecipitation; however, we recommend using the alternative formulation of this antibody found as product A303-491A. Immunohistochemistry 1:100 - 1:400. Epitope retrieval with citrate buffer pH 6.0 is recommended for FFPE tissue sections. ChIP-Seq The antibody contained within A303-491A-T has been qualified for use in ChIP-Seq; however, we recommend using the alternative formulation of this antibody found as product A303-491A.
APPLICATION NOTES	Western blot of immunoprecipitates performed using Normal Pig Serum (Cat. No. S100-020), Goat anti-Rabbit Light Chain HRP Conjugate (Cat. No. A120-113P) and 4-8% SDS-PAGE (link to IP-western blot protocol in Additional Info section below). Western blot of lysates performed using standard western blot reagents and 4-8% SDS-PAGE.
ADDITIONAL INFO	https://www.bethyl.com/product/A303-491A-T Use the link above to view SDS, a current list of citations, and other product specific information. IP-western blot protocol: https://www.bethyl.com/content/protocol_IP_WB



Detection of human GR by western blot. *Samples:* Whole cell lysate from HeLa (15 and 50 µg) and HEK293T (T; 50 µg) cells. *Antibody:* Affinity purified rabbit anti-GR antibody A303-491A-T used at 1:1000. *Detection:* Chemiluminescence with an exposure time of 30 seconds.