

GPATCH4 Antibody

Rabbit Polyclonal

Antigen Affinity Purified

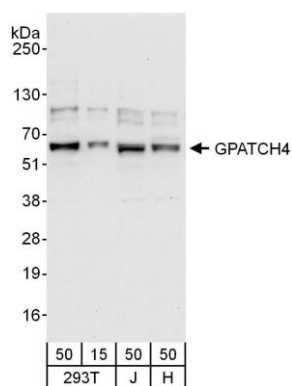
Catalog No. A303-405A-T

Protein ID EAW52937.1

GeneID 54865



APPLICATIONS	WB
SPECIES REACTIVITY	Human
AMOUNT	20 µl (2 blots)
CONCENTRATION	40 µg/ml
STORAGE/SHELF LIFE	2 - 8° C / 1 year from date of receipt
PHYSICAL STATE	Liquid
BUFFER	Tris-buffered Saline containing 0.1% BSA and 0.09% Sodium Azide
ISOTYPE	IgG
ORIGIN	USA
PRODUCTION PROCEDURES	Antibody was affinity purified using an epitope specific to GPATCH4 immobilized on solid support. The epitope recognized by A303-405A-T maps to a region between residue 396 and 446 of human G Patch Domain Containing 4 using the numbering given in entry EAW52937.1 (GeneID 54865).
APPLICATIONS	Centrifuge tube to remove product from lid. Optimal working dilutions should be determined experimentally by the investigator. Prepare working dilution immediately before use. Western Blot 1:1000 Immunoprecipitation Not recommended
APPLICATION NOTES	Western blot of lysates performed using standard western blot reagents and 4-12% SDS-PAGE.
ADDITIONAL INFO	https://www.bethyl.com/product/A303-405A-T Use the link above to view SDS, a current list of citations, and other product specific information.



Detection of human GPATCH4 by western blot. *Samples:* Whole cell lysate from HEK293T (15 and 50 μ g), Jurkat (J; 50 μ g) and HeLa (H; 50 μ g) cells. *Antibody:* Affinity purified rabbit anti-GPATCH4 antibody A303-405A-T used at 1:1000. *Detection:* Chemiluminescence with an exposure time of 10 seconds.