

# NOL10 Antibody

Rabbit Polyclonal

Antigen Affinity Purified

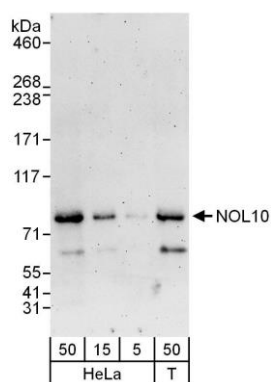
Catalog No. A302-799A-M

Protein ID NP\_079170.2

GeneID 79954



<b>APPLICATIONS</b>	WB, IHC
<b>SPECIES REACTIVITY</b>	Human
<b>AMOUNT</b>	100 µl (10 blots)
<b>CONCENTRATION</b>	100 µg/ml
<b>STORAGE/SHELF LIFE</b>	2 - 8° C / 1 year from date of receipt
<b>PHYSICAL STATE</b>	Liquid
<b>BUFFER</b>	Tris-buffered Saline containing 0.1% BSA and 0.09% Sodium Azide
<b>ISOTYPE</b>	IgG
<b>ORIGIN</b>	USA
<b>PRODUCTION PROCEDURES</b>	Antibody was affinity purified using an epitope specific to NOL10 immobilized on solid support. The epitope recognized by A302-799A-M maps to a region between residue 638 and 688 of human Nucleolar Protein 10 using the numbering given in entry NP_079170.2 (GeneID 79954).
<b>APPLICATIONS</b>	Centrifuge tube to remove product from lid. Optimal working dilutions should be determined experimentally by the investigator. Prepare working dilution immediately before use.  Western Blot                      1:1000 Immunoprecipitation            Not recommended Immunohistochemistry        1:100 - 1:500. Epitope retrieval with citrate buffer pH 6.0 is recommended for FFPE tissue sections.
<b>APPLICATION NOTES</b>	Western blot of lysates performed using standard western blot reagents and 4-8% SDS-PAGE.
<b>ADDITIONAL INFO</b>	<a href="https://www.bethyl.com/product/A302-799A-M">https://www.bethyl.com/product/A302-799A-M</a> Use the link above to view SDS, a current list of citations, and other product specific information.



**Detection of human NOL10 by western blot.** *Samples:* Whole cell lysate from HeLa (5, 15, and 50 µg) and HEK293T (T; 50 µg) cells. *Antibody:* Affinity purified rabbit anti-NOL10 antibody A302-799A-M used at 1:1000. *Detection:* Chemiluminescence with an exposure time of 3 minutes.