

NOL10 Antibody

Rabbit Polyclonal

Antigen Affinity Purified

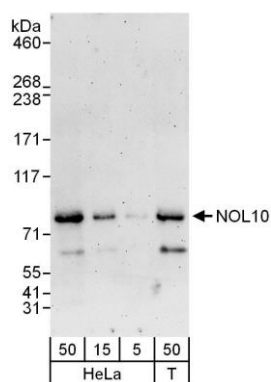
Catalog No. A302-799A-T

Protein ID NP_079170.2

GeneID 79954



APPLICATIONS	WB, IHC
SPECIES REACTIVITY	Human
AMOUNT	20 µl (2 blots)
CONCENTRATION	100 µg/ml
STORAGE/SHELF LIFE	2 - 8° C / 1 year from date of receipt
PHYSICAL STATE	Liquid
BUFFER	Tris-buffered Saline containing 0.1% BSA and 0.09% Sodium Azide
ISOTYPE	IgG
ORIGIN	USA
PRODUCTION PROCEDURES	Antibody was affinity purified using an epitope specific to NOL10 immobilized on solid support. The epitope recognized by A302-799A-T maps to a region between residue 638 and 688 of human Nucleolar Protein 10 using the numbering given in entry NP_079170.2 (GeneID 79954).
APPLICATIONS	Centrifuge tube to remove product from lid. Optimal working dilutions should be determined experimentally by the investigator. Prepare working dilution immediately before use. Western Blot 1:1000 Immunoprecipitation Not recommended Immunohistochemistry 1:100 - 1:500. Epitope retrieval with citrate buffer pH 6.0 is recommended for FFPE tissue sections.
APPLICATION NOTES	Western blot of lysates performed using standard western blot reagents and 4-8% SDS-PAGE.
ADDITIONAL INFO	https://www.bethyl.com/product/A302-799A-T Use the link above to view SDS, a current list of citations, and other product specific information.



Detection of human NOL10 by western blot. *Samples:* Whole cell lysate from HeLa (5, 15, and 50 µg) and HEK293T (T; 50 µg) cells. *Antibody:* Affinity purified rabbit anti-NOL10 antibody A302-799A-T used at 1:1000. *Detection:* Chemiluminescence with an exposure time of 3 minutes.