

# PSMA5 Antibody

Rabbit Polyclonal

Antigen Affinity Purified

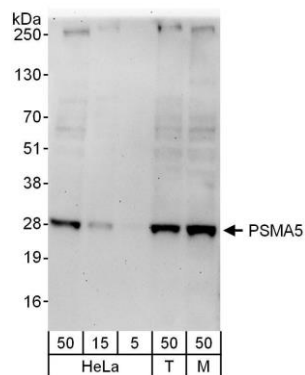
Catalog No. A302-749A-T

Protein ID NP\_002781.2

GeneID 5686



<b>APPLICATIONS</b>	WB, IHC
<b>SPECIES REACTIVITY</b>	Human, Mouse
<b>PRESUMED REACTIVITY</b>	Based on 100% sequence identity, this antibody is predicted to react with Rat and Bovine
<b>AMOUNT</b>	20 µl (2 blots)
<b>CONCENTRATION</b>	100 µg/ml
<b>STORAGE/SHELF LIFE</b>	2 - 8° C / 1 year from date of receipt
<b>PHYSICAL STATE</b>	Liquid
<b>BUFFER</b>	Tris-buffered Saline containing 0.1% BSA and 0.09% Sodium Azide
<b>ISOTYPE</b>	IgG
<b>ORIGIN</b>	USA
<b>PRODUCTION PROCEDURES</b>	Antibody was affinity purified using an epitope specific to PSMA5 immobilized on solid support.  The epitope recognized by A302-749A-T maps to a region between residue 100 and 150 of human Proteasome (Prosome, Macropain) Subunit, Alpha Type, 5 using the numbering given in entry NP_002781.2 (GeneID 5686).
<b>APPLICATIONS</b>	Centrifuge tube to remove product from lid. Optimal working dilutions should be determined experimentally by the investigator. Prepare working dilution immediately before use.  Western Blot                      1:1000  Immunoprecipitation            Not recommended  Immunohistochemistry        1:50 - 1:200. Epitope retrieval with citrate buffer pH 6.0 is recommended for FFPE tissue sections.
<b>APPLICATION NOTES</b>	Western blot of lysates performed using standard western blot reagents and 4-20% SDS-PAGE.
<b>ADDITIONAL INFO</b>	<a href="https://www.bethyl.com/product/A302-749A-T">https://www.bethyl.com/product/A302-749A-T</a> Use the link above to view SDS, a current list of citations, and other product specific information.

**Detection of human and mouse PSMA5 by western blot.**

*Samples:* Whole cell lysate from HeLa (5, 15, and 50 µg), HEK293T (T; 50 µg), and mouse NIH 3T3 (M; 50 µg) cells.

*Antibody:* Affinity purified rabbit anti-PSMA5 antibody A302-749A-T used at 1:1000. *Detection:*

Chemiluminescence with an exposure time of 3 minutes.