

# BAD Antibody

Rabbit Polyclonal

Antigen Affinity Purified

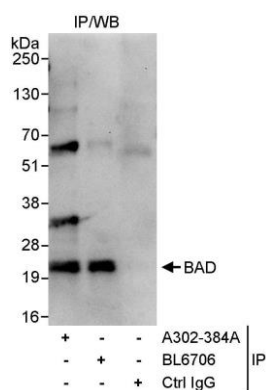
Protein ID NP\_004313.1

Catalog No. A302-384A-T

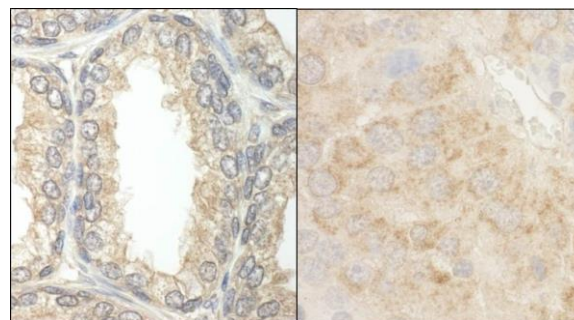
GeneID 572



<b>APPLICATIONS</b>	IP, IHC
<b>SPECIES REACTIVITY</b>	Human, Mouse
<b>PRESUMED REACTIVITY</b>	Based on 100% sequence identity, this antibody is predicted to react with Rat
<b>AMOUNT</b>	10 µl
<b>CONCENTRATION</b>	1000 µg/ml
<b>STORAGE/SHELF LIFE</b>	2 - 8° C / 1 year from date of receipt
<b>PHYSICAL STATE</b>	Liquid
<b>BUFFER</b>	Tris-citrate/phosphate buffer, pH 7 to 8 containing 0.09% Sodium Azide
<b>ISOTYPE</b>	IgG
<b>ORIGIN</b>	USA
<b>PRODUCTION PROCEDURES</b>	<p>Antibody was affinity purified using an epitope specific to BAD immobilized on solid support.</p> <p>The epitope recognized by A302-384A-T maps to a region between residue 1 and 50 of human BCL2-antagonist of cell death using the numbering given in entry NP_004313.1 (GeneID 572).</p> <p>Immunoglobulin concentration was determined by extinction coefficient: absorbance at 280 nm of 1.4 equals 1.0 mg of IgG.</p>
<b>APPLICATIONS</b>	<p>Centrifuge tube to remove product from lid. Optimal working dilutions should be determined experimentally by the investigator. Prepare working dilution immediately before use.</p> <p>Western Blot                      Not recommended. A302-384A-T has not performed satisfactorily when used for WB of BAD in crude preparations (e.g. whole cell lysate). This antibody can be used for WB of enriched (e.g. immunoprecipitated) sources of BAD.</p> <p>Immunoprecipitation            5 - 10 µg/mg lysate</p> <p>Immunohistochemistry        1:1,000 - 1:5,000. Epitope retrieval with citrate buffer pH 6.0 is recommended for FFPE tissue sections.</p>
<b>APPLICATION NOTES</b>	Western blot of immunoprecipitates performed using Normal Pig Serum (Cat. No. S100-020), Goat anti-Rabbit Light Chain HRP Conjugate (Cat. No. A120-113P) and 4-12% SDS-PAGE (link to IP-western blot protocol in Additional Info section below).
<b>ADDITIONAL INFO</b>	<p><a href="https://www.bethyl.com/product/A302-384A-T">https://www.bethyl.com/product/A302-384A-T</a></p> <p>Use the link above to view SDS, a current list of citations, and other product specific information. IP-western blot protocol: <a href="https://www.bethyl.com/content/protocol_IP_WB">https://www.bethyl.com/content/protocol_IP_WB</a></p>



**Detection of human BAD by western blot of immunoprecipitates.** *Samples:* Whole cell lysate (1 mg for IP, 20% of IP loaded) from HeLa cells. *Antibody:* Affinity purified rabbit anti-BAD antibody A302-384A-T used for IP at 10  $\mu\text{g}/\text{mg}$  lysate. BAD was also immunoprecipitated by rabbit anti-BAD antibody BL6706, which recognizes a downstream epitope. For blotting immunoprecipitated BAD, A302-384A-T was used at 1  $\mu\text{g}/\text{ml}$ . *Detection:* Chemiluminescence with an exposure time of 10 seconds.



**Detection of human and mouse BAD by immunohistochemistry.** *Samples:* FFPE section of human prostate carcinoma (left) and mouse renal cell carcinoma (right). *Antibody:* Affinity purified rabbit anti-BAD (Cat. No. A302-384A-T) used at a dilution of 1:5,000 (0.2  $\mu\text{g}/\text{ml}$ ) and 1:1,000 (1  $\mu\text{g}/\text{ml}$ ). *Detection:* DAB