

# TTF1 Antibody

Rabbit Polyclonal

Antigen Affinity Purified

Catalog No. A302-361A-T

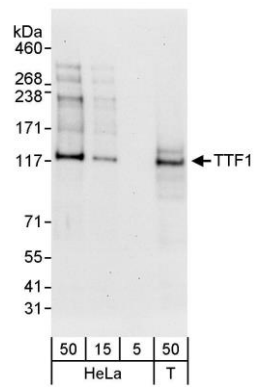
Protein ID CAA58807.1

GeneID 7270



---

<b>APPLICATIONS</b>	WB
<b>SPECIES REACTIVITY</b>	Human
<b>AMOUNT</b>	20 µl (2 blots)
<b>CONCENTRATION</b>	40 µg/ml
<b>STORAGE/SHELF LIFE</b>	2 - 8° C / 1 year from date of receipt
<b>PHYSICAL STATE</b>	Liquid
<b>BUFFER</b>	Tris-buffered Saline containing 0.1% BSA and 0.09% Sodium Azide
<b>ISOTYPE</b>	IgG
<b>ORIGIN</b>	USA
<b>PRODUCTION PROCEDURES</b>	Antibody was affinity purified using an epitope specific to TTF1 immobilized on solid support.  The epitope recognized by A302-361A-T maps to a region between residue 1 and 50 of human transcription termination factor, RNA polymerase I using the numbering given in entry CAA58807.1 (GeneID 7270).
<b>APPLICATIONS</b>	Centrifuge tube to remove product from lid. Optimal working dilutions should be determined experimentally by the investigator. Prepare working dilution immediately before use.  Western Blot                      1:1000  Immunoprecipitation          Not recommended
<b>APPLICATION NOTES</b>	Western blot of lysates performed using standard western blot reagents and 4-8% SDS-PAGE.
<b>ADDITIONAL INFO</b>	<a href="https://www.bethyl.com/product/A302-361A-T">https://www.bethyl.com/product/A302-361A-T</a> Use the link above to view SDS, a current list of citations, and other product specific information.



**Detection of human TTF1 by western blot.** *Samples:* Whole cell lysate from HeLa (5, 15, and 50 µg) and HEK293T (T; 50 µg) cells. *Antibody:* Affinity purified rabbit anti-TTF1 antibody A302-361A-T used at 1:1000. *Detection:* Chemiluminescence with an exposure time of 30 seconds.