

TTF1 Antibody

Rabbit Polyclonal

Antigen Affinity Purified

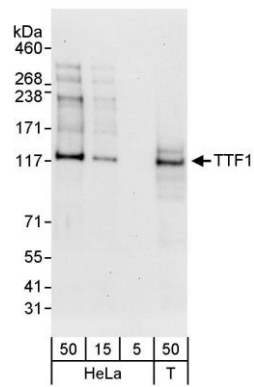
Protein ID CAA58807.1

Catalog No. A302-361A-M

GeneID 7270



APPLICATIONS	WB
SPECIES REACTIVITY	Human
AMOUNT	100 µl (10 blots)
CONCENTRATION	40 µg/ml
STORAGE/SHELF LIFE	2 - 8° C / 1 year from date of receipt
PHYSICAL STATE	Liquid
BUFFER	Tris-buffered Saline containing 0.1% BSA and 0.09% Sodium Azide
ISOTYPE	IgG
ORIGIN	USA
PRODUCTION PROCEDURES	Antibody was affinity purified using an epitope specific to TTF1 immobilized on solid support. The epitope recognized by A302-361A-M maps to a region between residue 1 and 50 of human transcription termination factor, RNA polymerase I using the numbering given in entry CAA58807.1 (GeneID 7270).
APPLICATIONS	Centrifuge tube to remove product from lid. Optimal working dilutions should be determined experimentally by the investigator. Prepare working dilution immediately before use. Western Blot 1:1000 Immunoprecipitation Not recommended
APPLICATION NOTES	Western blot of lysates performed using standard western blot reagents and 4-8% SDS-PAGE.
ADDITIONAL INFO	https://www.bethyl.com/product/A302-361A-M Use the link above to view SDS, a current list of citations, and other product specific information.



Detection of human TTF1 by western blot. *Samples:* Whole cell lysate from HeLa (5, 15, and 50 µg) and HEK293T (T; 50 µg) cells. *Antibody:* Affinity purified rabbit anti-TTF1 antibody A302-361A-M used at 1:1000. *Detection:* Chemiluminescence with an exposure time of 30 seconds.