

Endophilin A2 Antibody

Rabbit Polyclonal

Antigen Affinity Purified

Protein ID NP_003016.1

Catalog No. A302-350A-T

GeneID 6455



APPLICATIONS	IP
SPECIES REACTIVITY	Human
AMOUNT	10 µl
CONCENTRATION	1000 µg/ml
STORAGE/SHELF LIFE	2 - 8° C / 1 year from date of receipt
PHYSICAL STATE	Liquid
BUFFER	Tris-citrate/phosphate buffer, pH 7 to 8 containing 0.09% Sodium Azide
ISOTYPE	IgG
ORIGIN	USA
PRODUCTION PROCEDURES	Antibody was affinity purified using an epitope specific to Endophilin A2 immobilized on solid support.

The epitope recognized by A302-350A-T maps to a region between residue 275 and 325 of human endophilin A2 using the numbering given in entry NP_003016.1 (GeneID 6455).

Immunoglobulin concentration was determined by extinction coefficient: absorbance at 280 nm of 1.4 equals 1.0 mg of IgG.

APPLICATIONS Centrifuge tube to remove product from lid. Optimal working dilutions should be determined experimentally by the investigator. Prepare working dilution immediately before use.

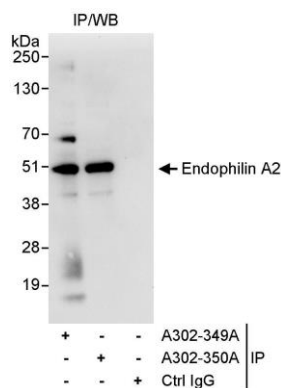
Western Blot Not recommended. Use rabbit anti-Endophilin A2 antibody A302-349A-T.

Immunoprecipitation 2 - 5 µg/mg lysate

APPLICATION NOTES Western blot of immunoprecipitates performed using Normal Pig Serum (Cat. No. S100-020), Goat anti-Rabbit Light Chain HRP Conjugate (Cat. No. A120-113P) and 4-20% SDS-PAGE (link to IP-western blot protocol in Additional Info section below).

ADDITIONAL INFO <https://www.bethyl.com/product/A302-350A-T>

Use the link above to view SDS, a current list of citations, and other product specific information. IP-western blot protocol: https://www.bethyl.com/content/protocol_IP_WB



Detection of human Endophilin A2 by western blot of immunoprecipitates. *Samples:* Whole cell lysate (1 mg for IP, 20% of IP loaded) from HeLa cells. *Antibody:* Affinity purified rabbit anti-Endophilin A2 antibody A302-350A-T used for IP at 3 µg/mg lysate. Endophilin A2 was also immunoprecipitated by rabbit anti-Endophilin A2 antibody A302-349A, which recognizes an upstream epitope. For blotting immunoprecipitated Endophilin A2, A302-349A was used at 1 µg/ml. *Detection:* Chemiluminescence with an exposure time of 10 seconds.