

IP3R3 Antibody

Rabbit Polyclonal

Antigen Affinity Purified

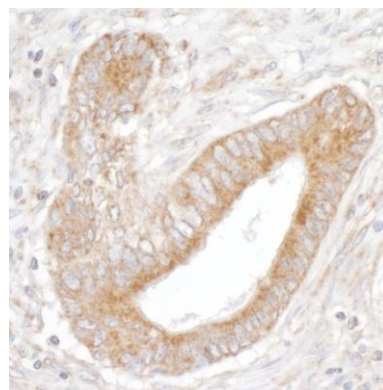
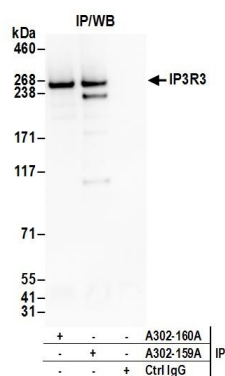
Protein ID NP_002215.2

Catalog No. A302-159A-T

GeneID 3710



APPLICATIONS	IP, IHC
SPECIES REACTIVITY	Human
AMOUNT	10 µl
CONCENTRATION	1000 µg/ml
STORAGE/SHELF LIFE	2 - 8° C / 1 year from date of receipt
PHYSICAL STATE	Liquid
BUFFER	Tris-citrate/phosphate buffer, pH 7 to 8 containing 0.09% Sodium Azide
ISOTYPE	IgG
ORIGIN	USA
PRODUCTION PROCEDURES	<p>Antibody was affinity purified using an epitope specific to IP3R3 immobilized on solid support.</p> <p>The epitope recognized by A302-159A-T maps to a region between residue 625 and 675 of human inositol 1,4,5-triphosphate receptor, type 3 using the numbering given in entry NP_002215.2 (GeneID 3710).</p> <p>Immunoglobulin concentration was determined by extinction coefficient: absorbance at 280 nm of 1.4 equals 1.0 mg of IgG.</p>
APPLICATIONS	<p>Centrifuge tube to remove product from lid. Optimal working dilutions should be determined experimentally by the investigator. Prepare working dilution immediately before use.</p> <p>Western Blot Not recommended. Use rabbit anti-IP3R3 antibody A302-160A-T.</p> <p>Immunoprecipitation 2 - 10 µg/mg lysate</p> <p>Immunohistochemistry 1:500 - 1:2,000. Epitope retrieval with citrate buffer pH 6.0 is recommended for FFPE tissue sections.</p>
APPLICATION NOTES	Western blot of immunoprecipitates performed using Normal Pig Serum (Cat. No. S100-020), Goat anti-Rabbit Light Chain HRP Conjugate (Cat. No. A120-113P) and 4-8% SDS-PAGE (link to IP-western blot protocol in Additional Info section below).
ADDITIONAL INFO	<p>https://www.bethyl.com/product/A302-159A-T</p> <p>Use the link above to view SDS, a current list of citations, and other product specific information.</p> <p>IP-western blot protocol: https://www.bethyl.com/content/protocol_IP_WB</p>



Detection of human IP3R3 by western blot of immunoprecipitates. *Samples:* Whole cell lysate (1.0 mg per IP reaction; 20% of IP loaded) from HeLa cells prepared using NETN lysis buffer. *Antibodies:* Affinity purified rabbit anti-IP3R3 antibody A302-159A-T (lot A302-159A-T-2) used for IP at 3 μ g per reaction. IP3R3 was also immunoprecipitated by rabbit anti-IP3R3 antibody A302-160A. For blotting immunoprecipitated IP3R3, A302-159A-T was used at 1 μ g/ml. *Detection:* Chemiluminescence with an exposure time of 3 minutes.

Detection of human IP3R3 by immunohistochemistry. *Sample:* FFPE section of human stomach carcinoma. *Antibody:* Affinity purified rabbit anti-IP3R3 (Cat. No. A302-159A Lot2) used at a dilution of 1:1,000 (1 μ g/ml). *Detection:* DAB