

# MADD Antibody

Rabbit Polyclonal

Antigen Affinity Purified

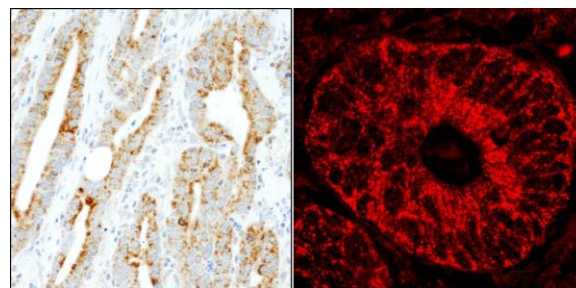
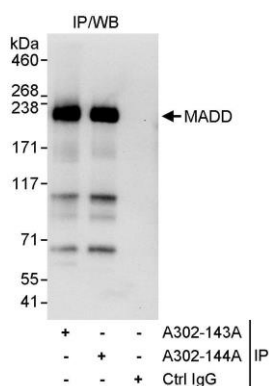
Protein ID NP\_003673.3

Catalog No. A302-144A-T

GeneID 8567



<b>APPLICATIONS</b>	IP, IHC, IHC-IF								
<b>SPECIES REACTIVITY</b>	Human								
<b>PRESUMED REACTIVITY</b>	Based on 100% sequence identity, this antibody is predicted to react with Rat								
<b>AMOUNT</b>	10 µl								
<b>CONCENTRATION</b>	1000 µg/ml								
<b>STORAGE/SHELF LIFE</b>	2 - 8° C / 1 year from date of receipt								
<b>PHYSICAL STATE</b>	Liquid								
<b>BUFFER</b>	Tris-citrate/phosphate buffer, pH 7 to 8 containing 0.09% Sodium Azide								
<b>ISOTYPE</b>	IgG								
<b>ORIGIN</b>	USA								
<b>PRODUCTION PROCEDURES</b>	<p>Antibody was affinity purified using an epitope specific to MADD immobilized on solid support.</p> <p>The epitope recognized by A302-144A-T maps to a region between residue 1597 and 1647 of human MAP-kinase activating death domain using the numbering given in entry NP_003673.3 (GeneID 8567).</p> <p>Immunoglobulin concentration was determined by extinction coefficient: absorbance at 280 nm of 1.4 equals 1.0 mg of IgG.</p>								
<b>APPLICATIONS</b>	<p>Centrifuge tube to remove product from lid. Optimal working dilutions should be determined experimentally by the investigator. Prepare working dilution immediately before use.</p> <table><tr><td>Western Blot</td><td>Not recommended. Use rabbit anti-MADD antibody A302-143A-T.</td></tr><tr><td>Immunoprecipitation</td><td>2 - 5 µg/mg lysate</td></tr><tr><td>Immunohistochemistry</td><td>1:1,000 - 1:5,000. Epitope retrieval with citrate buffer pH 6.0 is recommended for FFPE tissue sections.</td></tr><tr><td>Immunofluorescence (IHC)</td><td>1:500 - 1:2,500</td></tr></table>	Western Blot	Not recommended. Use rabbit anti-MADD antibody A302-143A-T.	Immunoprecipitation	2 - 5 µg/mg lysate	Immunohistochemistry	1:1,000 - 1:5,000. Epitope retrieval with citrate buffer pH 6.0 is recommended for FFPE tissue sections.	Immunofluorescence (IHC)	1:500 - 1:2,500
Western Blot	Not recommended. Use rabbit anti-MADD antibody A302-143A-T.								
Immunoprecipitation	2 - 5 µg/mg lysate								
Immunohistochemistry	1:1,000 - 1:5,000. Epitope retrieval with citrate buffer pH 6.0 is recommended for FFPE tissue sections.								
Immunofluorescence (IHC)	1:500 - 1:2,500								
<b>APPLICATION NOTES</b>	Western blot of immunoprecipitates performed using Normal Pig Serum (Cat. No. S100-020), Goat anti-Rabbit Light Chain HRP Conjugate (Cat. No. A120-113P) and 4-8% SDS-PAGE (link to IP-western blot protocol in Additional Info section below).								
<b>ADDITIONAL INFO</b>	<p><a href="https://www.bethyl.com/product/A302-144A-T">https://www.bethyl.com/product/A302-144A-T</a></p> <p>Use the link above to view SDS, a current list of citations, and other product specific information. IP-western blot protocol: <a href="https://www.bethyl.com/content/protocol_IP_WB">https://www.bethyl.com/content/protocol_IP_WB</a></p>								



**Detection of human MADD by western blot of immunoprecipitates.** *Samples:* Whole cell lysate (1 mg for IP, 20% of IP loaded) from HeLa cells. *Antibody:* Affinity purified rabbit anti-MADD antibody A302-144A-T used for IP at 3 µg/mg lysate. MADD was also immunoprecipitated by rabbit anti-MADD antibody A302-143A, which recognizes an upstream epitope. For blotting immunoprecipitated MADD, A302-143A was used at 1 µg/ml. *Detection:* Chemiluminescence with an exposure time of 10 seconds.

**Detection of human MADD by immunohistochemistry.** *Samples:* FFPE sections of human breast carcinoma and colon carcinoma. *Antibody:* Affinity purified rabbit anti-MADD (Cat. No. A302-144A-T Lot1) used at a dilution of 1:1,000 (1 µg/ml). *Detection:* DAB and Red-fluorescent goat anti-rabbit IgG-heavy and light chain, cross-adsorbed Antibody DyLight 594 Conjugated used at a dilution of 1:100.