

G3BP2 Antibody

Rabbit Polyclonal

Antigen Affinity Purified

Protein ID NP_036429.2

Catalog No. A302-040A-M
A302-040A-M-4

GeneID 9908



APPLICATIONS	WB, IP
SPECIES REACTIVITY	Human
PRESUMED REACTIVITY	Based on 100% sequence identity, this antibody is predicted to react with Mouse and Orangutan
AMOUNT	100 µl (10 blots)
CONCENTRATION	40 µg/ml
STORAGE/SHELF LIFE	2 – 8° C / 1 year from date of receipt
PHYSICAL STATE	Liquid
BUFFER	Tris-buffered Saline containing 0.1% BSA and 0.09% Sodium Azide
ISOTYPE	IgG
ORIGIN	USA
PRODUCTION PROCEDURES	Antibody was affinity purified using an epitope specific to G3BP2 immobilized on solid support.

The epitope recognized by A302-040A-M maps to a region between residue 275 and 325 of human GTPase activating protein (SH3 domain) binding protein 2 using the numbering given in entry NP_036429.2 (GeneID 9908).

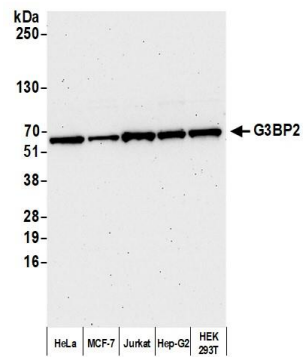
APPLICATIONS Centrifuge tube to remove product from lid. Optimal working dilutions should be determined experimentally by the investigator. Prepare working dilution immediately before use.

Western Blot 1:1000

Immunoprecipitation The antibody contained within A302-040A-M has been qualified for use in immunoprecipitation; however, we recommend using the alternative formulation of this antibody found as product A302-040A.

ADDITIONAL INFO <https://www.bethyl.com/product/A302-040A-M>

Use the link above to view SDS, a current list of citations, and other product specific information. IP-western blot protocol: https://www.bethyl.com/content/protocol_IP_WB



Detection of human G3BP2 by western blot. *Samples:* Whole cell lysate (10 µg) from HeLa, MCF-7, Jurkat, Hep-G2, and HEK293T cells prepared using NETN lysis buffer. *Antibody:* Affinity purified rabbit anti-G3BP2 antibody (A302-040A-M lot 4) used for WB at 1:1000. *Detection:* Chemiluminescence with an exposure time of 75 seconds.