

# G3BP2 Antibody

Rabbit Polyclonal

Antigen Affinity Purified

Protein ID NP\_036429.2

Catalog No. A302-040A-T  
A302-040A-T-4

GeneID 9908



|                              |   |
|------------------------------|---|
| <b>APPLICATIONS</b>          | WB, IP  |
| <b>SPECIES REACTIVITY</b>    | Human   |
| <b>PRESUMED REACTIVITY</b>   | Based on 100% sequence identity, this antibody is predicted to react with Mouse and Orangutan   |
| <b>AMOUNT</b>                | 20 µl (2 blots)   |
| <b>CONCENTRATION</b>         | 40 µg/ml  |
| <b>STORAGE/SHELF LIFE</b>    | 2 – 8° C / 1 year from date of receipt  |
| <b>PHYSICAL STATE</b>        | Liquid  |
| <b>BUFFER</b>                | Tris-buffered Saline containing 0.1% BSA and 0.09% Sodium Azide                                 |
| <b>ISOTYPE</b>               | IgG   |
| <b>ORIGIN</b>                | USA   |
| <b>PRODUCTION PROCEDURES</b> | Antibody was affinity purified using an epitope specific to G3BP2 immobilized on solid support. |

The epitope recognized by A302-040A-T maps to a region between residue 275 and 325 of human GTPase activating protein (SH3 domain) binding protein 2 using the numbering given in entry NP\_036429.2 (GeneID 9908).

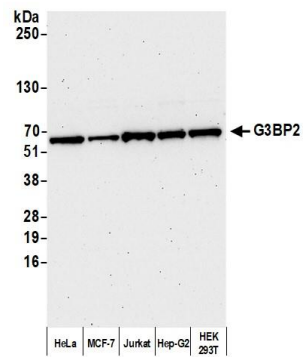
**APPLICATIONS** Centrifuge tube to remove product from lid. Optimal working dilutions should be determined experimentally by the investigator. Prepare working dilution immediately before use.

Western Blot 1:1000

Immunoprecipitation The antibody contained within A302-040A-T has been qualified for use in immunoprecipitation; however, we recommend using the alternative formulation of this antibody found as product A302-040A.

**ADDITIONAL INFO** <https://www.bethyl.com/product/A302-040A-T>

Use the link above to view SDS, a current list of citations, and other product specific information. IP-western blot protocol: [https://www.bethyl.com/content/protocol\\_IP\\_WB](https://www.bethyl.com/content/protocol_IP_WB)



**Detection of human G3BP2 by western blot.** *Samples:* Whole cell lysate (10 µg) from HeLa, MCF-7, Jurkat, Hep-G2, and HEK293T cells prepared using NETN lysis buffer. *Antibody:* Affinity purified rabbit anti-G3BP2 antibody (A302-040A-T lot 4) used for WB at 1:1000. *Detection:* Chemiluminescence with an exposure time of 75 seconds.