

ch-TOG Antibody

Rabbit Polyclonal

Antigen Affinity Purified

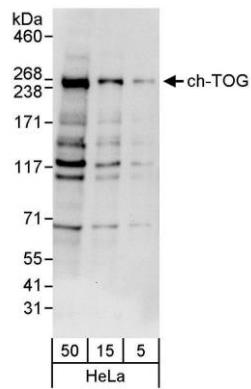
Protein ID NP_001008938.1

Catalog No. A301-969A-T

GeneID 9793



| | |
|------------------------------|---|
| APPLICATIONS | WB, IP |
| SPECIES REACTIVITY | Human |
| AMOUNT | 20 µl (2 blots) |
| CONCENTRATION | 40 µg/ml |
| STORAGE/SHELF LIFE | 2 - 8° C / 1 year from date of receipt |
| PHYSICAL STATE | Liquid |
| BUFFER | Tris-buffered Saline containing 0.1% BSA and 0.09% Sodium Azide |
| ISOTYPE | IgG |
| ORIGIN | USA |
| PRODUCTION PROCEDURES | Antibody was affinity purified using an epitope specific to ch-TOG immobilized on solid support. The epitope recognized by A301-969A-T maps to a region between residue 875 and 925 of human colonic and hepatic tumor over-expressed protein using the numbering given in entry NP_001008938.1 (GeneID 9793). |
| APPLICATIONS | Centrifuge tube to remove product from lid. Optimal working dilutions should be determined experimentally by the investigator. Prepare working dilution immediately before use. Western Blot 1:1000 Immunoprecipitation The antibody contained within A301-969A-T has been qualified for use in immunoprecipitation; however, we recommend using the alternative formulation of this antibody found as product A301-969A. |
| APPLICATION NOTES | Western blot of immunoprecipitates performed using Normal Pig Serum (Cat. No. S100-020), Goat anti-Rabbit Light Chain HRP Conjugate (Cat. No. A120-113P) and 4-8% SDS-PAGE (link to IP-western blot protocol in Additional Info section below). Western blot of lysates performed using standard western blot reagents and 4-8% SDS-PAGE. |
| ADDITIONAL INFO | https://www.bethyl.com/product/A301-969A-T Use the link above to view SDS, a current list of citations, and other product specific information. IP-western blot protocol: https://www.bethyl.com/content/protocol_IP_WB |



Detection of human ch-TOG by western blot. *Samples:* Whole cell lysate (5, 15, and 50 µg) from HeLa cells. *Antibody:* Affinity purified rabbit anti-ch-TOG antibody A301-969A-T used at 1:1000. *Detection:* Chemiluminescence with an exposure time of 30 seconds.