

Cyclin K Antibody

Rabbit Polyclonal

Antigen Affinity Purified

Protein ID NP_001092872.1

Catalog No. A301-939A-M
A301-939A-M-9

GeneID 8812



APPLICATIONS	WB, IP, IHC
SPECIES REACTIVITY	Human, Mouse
AMOUNT	100 µl (10 blots)
CONCENTRATION	40 µg/ml
STORAGE/SHELF LIFE	2 – 8° C / 1 year from date of receipt
PHYSICAL STATE	Liquid
BUFFER	Tris-buffered Saline containing 0.1% BSA and 0.09% Sodium Azide
ISOTYPE	IgG
ORIGIN	USA
PRODUCTION PROCEDURES	Antibody was affinity purified using an epitope specific to Cyclin K immobilized on solid support.

The epitope recognized by A301-939A-M maps to a region between residue 530 and 580 of human cyclin K using the numbering given in entry NP_001092872.1 (GeneID 8812).

APPLICATIONS Centrifuge tube to remove product from lid. Optimal working dilutions should be determined experimentally by the investigator. Prepare working dilution immediately before use.

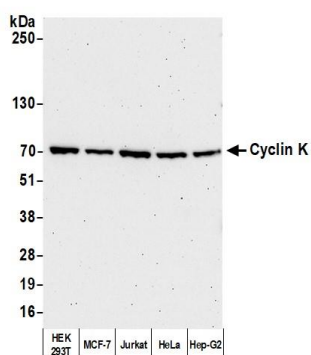
Western Blot 1:1000

Immunoprecipitation The antibody contained within A301-939A-M has been qualified for use in immunoprecipitation; however, we recommend using the alternative formulation of this antibody found as product A301-939A.

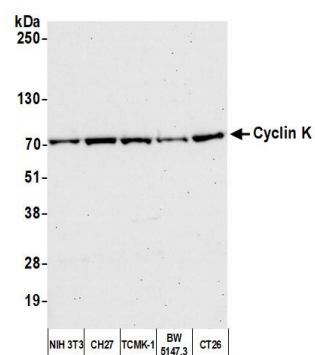
Immunohistochemistry 1:40 to 1:200. Epitope retrieval with citrate buffer pH6.0 is recommended for FFPE tissue sections.

ADDITIONAL INFO <https://www.bethyl.com/product/A301-939A-M>

Use the link above to view SDS, a current list of citations, and other product specific information. IP-western blot protocol: https://www.bethyl.com/content/protocol_IP_WB



Detection of human Cyclin K by western blot. *Samples:* Whole cell lysate (50 μ g) from HEK293T, MCF-7, Jurkat, HeLa, and Hep-G2 cells prepared using NETN lysis buffer. *Antibody:* Affinity purified rabbit anti-Cyclin K antibody (A301-939A-M lot 9) used for WB at 1:1000. *Detection:* Chemiluminescence with an exposure time of 75 seconds.



Detection of mouse Cyclin K by western blot. *Samples:* Whole cell lysate (50 μ g) from NIH 3T3, CH27, TCMK-1, BW5147.3, and CT26 cells prepared using NETN lysis buffer. *Antibody:* Affinity purified rabbit anti-Cyclin K antibody (A301-939A-M lot 9) used for WB at 1:1000. *Detection:* Chemiluminescence with an exposure time of 30 seconds.