

# Cyclin K Antibody

Rabbit Polyclonal

Antigen Affinity Purified

Protein ID NP\_001092872.1

Catalog No. A301-939A-T  
A301-939A-T-9

GeneID 8812



<b>APPLICATIONS</b>	WB, IP, IHC
<b>SPECIES REACTIVITY</b>	Human, Mouse
<b>AMOUNT</b>	20 µl (2 blots)
<b>CONCENTRATION</b>	40 µg/ml
<b>STORAGE/SHELF LIFE</b>	2 - 8° C / 1 year from date of receipt
<b>PHYSICAL STATE</b>	Liquid
<b>BUFFER</b>	Tris-buffered Saline containing 0.1% BSA and 0.09% Sodium Azide
<b>ISOTYPE</b>	IgG
<b>ORIGIN</b>	USA
<b>PRODUCTION PROCEDURES</b>	Antibody was affinity purified using an epitope specific to Cyclin K immobilized on solid support.

The epitope recognized by A301-939A-T maps to a region between residue 530 and 580 of human cyclin K using the numbering given in entry NP\_001092872.1 (GeneID 8812).

**APPLICATIONS** Centrifuge tube to remove product from lid. Optimal working dilutions should be determined experimentally by the investigator. Prepare working dilution immediately before use.

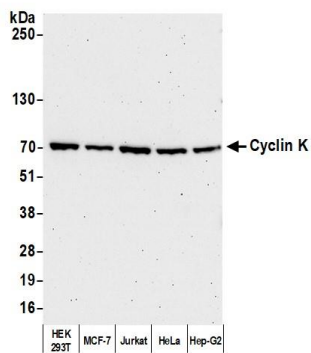
Western Blot 1:1000

Immunoprecipitation The antibody contained within A301-939A-T has been qualified for use in immunoprecipitation; however, we recommend using the alternative formulation of this antibody found as product A301-939A.

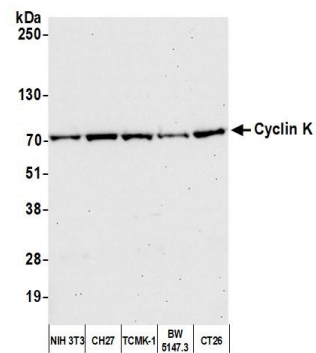
Immunohistochemistry 1:40 to 1:200. Epitope retrieval with citrate buffer pH6.0 is recommended for FFPE tissue sections.

**ADDITIONAL INFO** <https://www.bethyl.com/product/A301-939A-T>

Use the link above to view SDS, a current list of citations, and other product specific information. IP-western blot protocol: [https://www.bethyl.com/content/protocol\\_IP\\_WB](https://www.bethyl.com/content/protocol_IP_WB)



**Detection of human Cyclin K by western blot.** *Samples:* Whole cell lysate (50  $\mu$ g) from HEK293T, MCF-7, Jurkat, HeLa, and Hep-G2 cells prepared using NETN lysis buffer. *Antibody:* Affinity purified rabbit anti-Cyclin K antibody (A301-939A-T lot 9) used for WB at 1:1000. *Detection:* Chemiluminescence with an exposure time of 75 seconds.



**Detection of mouse Cyclin K by western blot.** *Samples:* Whole cell lysate (50  $\mu$ g) from NIH 3T3, CH27, TCMK-1, BW5147.3, and CT26 cells prepared using NETN lysis buffer. *Antibody:* Affinity purified rabbit anti-Cyclin K antibody (A301-939A-T lot 9) used for WB at 1:1000. *Detection:* Chemiluminescence with an exposure time of 30 seconds.