

GEF-H1 Antibody

Rabbit Polyclonal

Antigen Affinity Purified

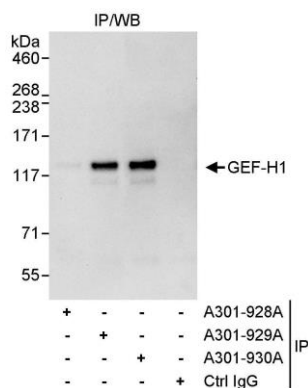
Protein ID CAH72629.1

Catalog No. A301-930A-T

GeneID 9181



| | |
|------------------------------|---|
| APPLICATIONS | IP |
| SPECIES REACTIVITY | Human |
| AMOUNT | 10 µl |
| CONCENTRATION | 1000 µg/ml |
| STORAGE/SHELF LIFE | 2 - 8° C / 1 year from date of receipt |
| PHYSICAL STATE | Liquid |
| BUFFER | Tris-citrate/phosphate buffer, pH 7 to 8 containing 0.09% Sodium Azide |
| ISOTYPE | IgG |
| ORIGIN | USA |
| PRODUCTION PROCEDURES | <p>Antibody was affinity purified using an epitope specific to GEF-H1 immobilized on solid support.</p> <p>The epitope recognized by A301-930A-T maps to a region between residue 850 and 900 of human guanine nucleotide exchange factor H1 using the numbering given in entry CAH72629.1 (GeneID 9181).</p> <p>Immunoglobulin concentration was determined by extinction coefficient: absorbance at 280 nm of 1.4 equals 1.0 mg of IgG.</p> |
| APPLICATIONS | <p>Centrifuge tube to remove product from lid. Optimal working dilutions should be determined experimentally by the investigator. Prepare working dilution immediately before use.</p> <p>Western Blot Not recommended. Use rabbit anti-GEF-H1 antibody A301-928A-T.</p> <p>Immunoprecipitation 2 - 5 µg/mg lysate</p> |
| APPLICATION NOTES | Western blot of immunoprecipitates performed using Normal Pig Serum (Cat. No. S100-020), Goat anti-Rabbit Light Chain HRP Conjugate (Cat. No. A120-113P) and 4-8% SDS-PAGE (link to IP-western blot protocol in Additional Info section below). |
| ADDITIONAL INFO | <p>https://www.bethyl.com/product/A301-930A-T</p> <p>Use the link above to view SDS, a current list of citations, and other product specific information. IP-western blot protocol: https://www.bethyl.com/content/protocol_IP_WB</p> |



Detection of human GEF-H1 by western blot of immunoprecipitates. *Samples:* Whole cell lysate (1 mg for IP, 20% of IP loaded) from HeLa cells. *Antibody:* Affinity purified rabbit anti-GEF-H1 antibody A301-930A-T used for IP at 3 µg/mg lysate. GEF-H1 was also immunoprecipitated by rabbit anti-GEF-H1 antibodies A301-928A and A301-929A, which recognize upstream epitopes. For blotting immunoprecipitated GEF-H1, A301-928A was used at 1 µg/ml. *Detection:* Chemiluminescence with an exposure time of 10 seconds.