

GEF-H1 Antibody

Rabbit Polyclonal

Antigen Affinity Purified

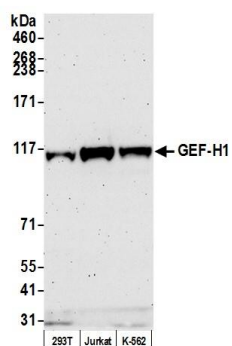
Catalog No. A301-928A-M

Protein ID CAH72629.1

GeneID 9181



APPLICATIONS	WB, IHC
SPECIES REACTIVITY	Human
PRESUMED REACTIVITY	Based on 100% sequence identity, this antibody is predicted to react with Pig
AMOUNT	100 µl (10 blots)
CONCENTRATION	500 µg/ml
STORAGE/SHELF LIFE	2 - 8° C / 1 year from date of receipt
PHYSICAL STATE	Liquid
BUFFER	Tris-buffered Saline containing 0.1% BSA and 0.09% Sodium Azide
ISOTYPE	IgG
ORIGIN	USA
PRODUCTION PROCEDURES	Antibody was affinity purified using an epitope specific to GEF-H1 immobilized on solid support. The epitope recognized by A301-928A-M maps to a region between residue 625 and 675 of human guanine nucleotide exchange factor H1 using the numbering given in entry CAH72629.1 (GeneID 9181).
APPLICATIONS	Centrifuge tube to remove product from lid. Optimal working dilutions should be determined experimentally by the investigator. Prepare working dilution immediately before use. Western Blot 1:1000 Immunoprecipitation Not recommended Immunohistochemistry 1:50 to 1:200. Epitope retrieval with citrate buffer pH6.0 is recommended for FFPE tissue sections.
APPLICATION NOTES	Western blot of lysates performed using standard western blot reagents and 4-8% SDS-PAGE.
ADDITIONAL INFO	https://www.bethyl.com/product/A301-928A-M Use the link above to view SDS, a current list of citations, and other product specific information.



Detection of human GEF-H1 by western blot. *Samples:* Whole cell lysate (50 µg) from HEK293T, Jurkat, and K-562 cells prepared using NETN lysis buffer. *Antibody:* Affinity purified rabbit anti-GEF-H1 antibody A301-928A-M (lot A301-928A-M-2) used for WB at 1:1000. *Detection:* Chemiluminescence with an exposure time of 3 minutes.