

IKK-beta Antibody

Rabbit Polyclonal

Antigen Affinity Purified

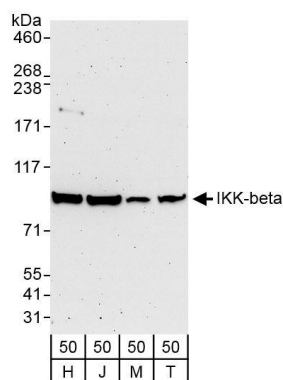
Catalog No. A301-827A-T

Protein ID NP_001547.1

GeneID 3551



APPLICATIONS	WB, IP
SPECIES REACTIVITY	Human
AMOUNT	20 µl (2 blots)
CONCENTRATION	40 µg/ml
STORAGE/SHELF LIFE	2 - 8° C / 1 year from date of receipt
PHYSICAL STATE	Liquid
BUFFER	Tris-buffered Saline containing 0.1% BSA and 0.09% Sodium Azide
ISOTYPE	IgG
ORIGIN	USA
PRODUCTION PROCEDURES	Antibody was affinity purified using an epitope specific to IKK-beta immobilized on solid support. The epitope recognized by A301-827A-T maps to a region between residue 706 and 756 of human inhibitor of kappa light polypeptide gene enhancer in B-cells, kinase beta using the numbering given in entry NP_001547.1 (GeneID 3551).
APPLICATIONS	Centrifuge tube to remove product from lid. Optimal working dilutions should be determined experimentally by the investigator. Prepare working dilution immediately before use. Western Blot 1:1000 Immunoprecipitation The antibody contained within A301-827A-T has been qualified for use in immunoprecipitation; however, we recommend using the alternative formulation of this antibody found as product A301-827A.
APPLICATION NOTES	Western blot of immunoprecipitates performed using Normal Pig Serum (Cat. No. S100-020), Goat anti-Rabbit Light Chain HRP Conjugate (Cat. No. A120-113P) and 4-8% SDS-PAGE (link to IP-western blot protocol in Additional Info section below).
ADDITIONAL INFO	Western blot of lysates performed using standard western blot reagents and 4-8% SDS-PAGE. https://www.bethyl.com/product/A301-827A-T Use the link above to view SDS, a current list of citations, and other product specific information. IP-western blot protocol https://www.bethyl.com/content/protocol_IP_WB



Detection of human IKK-beta by western blot. *Samples:* Whole cell lysate from HeLa (H; 50 µg), Jurkat (J; 50 µg), MCF-7 (M; 50 µg), and HEK293T (T; 50 µg) cells.
Antibodies: Affinity purified rabbit anti-IKK-beta antibody A301-827A-T (lot A301-827A-T-1) used for WB at 1:1000. ***Detection:*** Chemiluminescence with exposure times of 3 minute.