

eIF3G/EIF3S4 Antibody

Rabbit Polyclonal

Antigen Affinity Purified

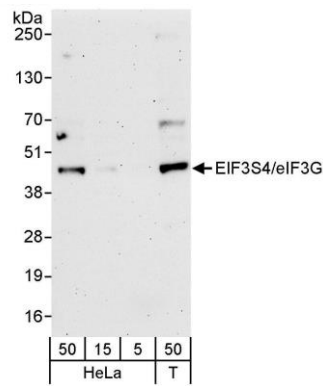
Protein ID NP_003746.2

Catalog No. A301-756A-T

GeneID 8666



APPLICATIONS	WB				
SPECIES REACTIVITY	Human				
PRESUMED REACTIVITY	Based on 100% sequence identity, this antibody is predicted to react with Mouse, Rat and Bovine				
AMOUNT	20 µl (2 blots)				
CONCENTRATION	40 µg/ml				
STORAGE/SHELF LIFE	2 - 8° C / 1 year from date of receipt				
PHYSICAL STATE	Liquid				
BUFFER	Tris-buffered Saline containing 0.1% BSA and 0.09% Sodium Azide				
ISOTYPE	IgG				
ORIGIN	USA				
PRODUCTION PROCEDURES	<p>Antibody was affinity purified using an epitope specific to eIF3G/EIF3S4 immobilized on solid support.</p> <p>The epitope recognized by A301-756A-T maps to a region between residue 100 and 150 of human eukaryotic translation initiation factor 3, subunit G (eukaryotic translation initiation factor 3, subunit 4) using the numbering given in entry NP_003746.2 (GeneID 8666).</p>				
APPLICATIONS	<p>Centrifuge tube to remove product from lid. Optimal working dilutions should be determined experimentally by the investigator. Prepare working dilution immediately before use.</p> <table><tr><td>Western Blot</td><td>1:1000</td></tr><tr><td>Immunoprecipitation</td><td>Not recommended</td></tr></table>	Western Blot	1:1000	Immunoprecipitation	Not recommended
Western Blot	1:1000				
Immunoprecipitation	Not recommended				
APPLICATION NOTES	Western blot of lysates performed using standard western blot reagents and 4-20% SDS-PAGE.				
ADDITIONAL INFO	<p>https://www.bethyl.com/product/A301-756A-T</p> <p>Use the link above to view SDS, a current list of citations, and other product specific information.</p>				

**Detection of human eIF3G/EIF3S4 by western blot.**

Samples: Whole cell lysate from HeLa (5, 15, and 50 µg) and HEK293T (T; 50 µg) cells. *Antibody:* Affinity purified rabbit anti-eIF3G/EIF3S4 antibody A301-756A-T used at 1:1000. *Detection:* Chemiluminescence with an exposure time of 3 minutes.