

SMARCAD1 /ETL1 Antibody

Rabbit Polyclonal

Antigen Affinity Purified

Protein ID NP_064544.1

Catalog No. A301-593A-T
A301-593A-T-1

GeneID 56916



APPLICATIONS	WB, IP
SPECIES REACTIVITY	Human
PRESUMED REACTIVITY	Based on 100% sequence identity, this antibody is predicted to react with Mouse, Rat and Bovine
AMOUNT	20 µl (2 blots)
CONCENTRATION	40 µg/ml
STORAGE/SHELF LIFE	2 - 8° C / 1 year from date of receipt
PHYSICAL STATE	Liquid
BUFFER	Tris-buffered Saline containing 0.1% BSA and 0.09% Sodium Azide
ISOTYPE	IgG
ORIGIN	USA
PRODUCTION PROCEDURES	Antibody was affinity purified using an epitope specific to SMARCAD1 /ETL1 immobilized on solid support.

The epitope recognized by A301-593A-T maps to a region between residue 976 and 1026 of human SWI/SNF-related matrix-associated actin-dependent regulator of chromatin subfamily A containing DEAD/H box 1 (enhancer trap locus 1) using the numbering given in entry NP_064544.1 (GeneID 56916).

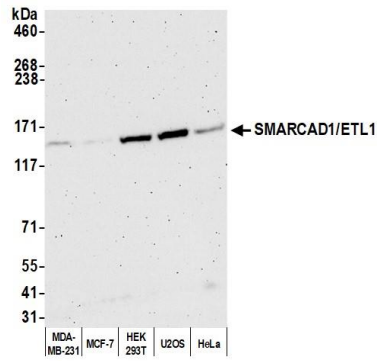
APPLICATIONS Centrifuge tube to remove product from lid. Optimal working dilutions should be determined experimentally by the investigator. Prepare working dilution immediately before use.

Western Blot 1:1000

Immunoprecipitation The antibody contained within A301-593A-T has been qualified for use in immunoprecipitation; however, we recommend using the alternative formulation of this antibody found as product A301-593A.

ADDITIONAL INFO <https://www.bethyl.com/product/A301-593A-T>

Use the link above to view SDS, a current list of citations, and other product specific information. IP-western blot protocol: https://www.bethyl.com/content/protocol_IP_WB

**Detection of human SMARCAD1/ETL1 by western blot.**

Samples: Whole cell lysate (50 µg) from MDA-MB-231, MCF-7, HEK293T, U2OS, and HeLa cells prepared using NETN lysis buffer. *Antibody:* Affinity purified rabbit anti-SMARCAD1/ETL1 antibody A301-593A-T (lot A301-593A-T-1) used for WB at 1:1,000. *Detection:* Chemiluminescence with an exposure time of 3 minutes.