

# WTAP Antibody

Rabbit Polyclonal

Antigen Affinity Purified

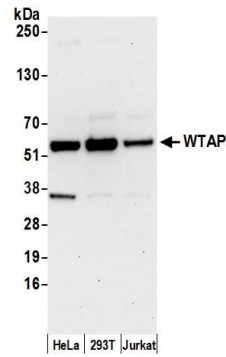
Protein ID NP\_004897.2

Catalog No. A301-436A-T

GeneID 9589



<b>APPLICATIONS</b>	WB, IP, IHC
<b>SPECIES REACTIVITY</b>	Human
<b>PRESUMED REACTIVITY</b>	Based on 100% sequence identity, this antibody is predicted to react with <i>X. laevis</i> and <i>X. tropicalis</i>
<b>AMOUNT</b>	20 µl (2 blots)
<b>CONCENTRATION</b>	100 µg/ml
<b>STORAGE/SHELF LIFE</b>	2 - 8° C / 1 year from date of receipt
<b>PHYSICAL STATE</b>	Liquid
<b>BUFFER</b>	Tris-buffered Saline containing 0.1% BSA and 0.09% Sodium Azide
<b>ISOTYPE</b>	IgG
<b>ORIGIN</b>	USA
<b>PRODUCTION PROCEDURES</b>	Antibody was affinity purified using an epitope specific to WTAP immobilized on solid support.  The epitope recognized by A301-436A-T maps to a region between residue 346 and 396 of human Wilms tumor 1 associated protein using the numbering given in entry NP_004897.2 (GeneID 9589).
<b>APPLICATIONS</b>	Centrifuge tube to remove product from lid. Optimal working dilutions should be determined experimentally by the investigator. Prepare working dilution immediately before use.  Western Blot 1:1000  Immunoprecipitation The antibody contained within A301-436A-T has been qualified for use in immunoprecipitation; however, we recommend using the alternative formulation of this antibody found as product A301-436A.  Immunohistochemistry 1:100 - 1:500. Epitope retrieval with citrate buffer pH 6.0 is recommended for FFPE tissue sections.
<b>APPLICATION NOTES</b>	Western blot of immunoprecipitates performed using Normal Pig Serum (Cat. No. S100-020), Goat anti-Rabbit Light Chain HRP Conjugate (Cat. No. A120-113P) and 4-20% SDS-PAGE (link to IP-western blot protocol in Additional Info section below).  Western blot of lysates performed using standard western blot reagents and 4-20% SDS-PAGE.
<b>ADDITIONAL INFO</b>	<a href="https://www.bethyl.com/product/A301-436A-T">https://www.bethyl.com/product/A301-436A-T</a> Use the link above to view SDS, a current list of citations, and other product specific information. IP-western blot protocol: <a href="https://www.bethyl.com/content/protocol_IP_WB">https://www.bethyl.com/content/protocol_IP_WB</a>



**Detection of human WTAP by western blot.** *Samples:* Whole cell lysate (15  $\mu$ g) from HeLa, HEK293T, and Jurkat cells prepared using NETN lysis buffer. *Antibody:* Affinity purified rabbit anti-WTAP antibody A301-436A-T (lot A301-436A-T-2) used for WB at 1:1000. *Detection:* Chemiluminescence with an exposure time of 30 seconds.