

FKBP5/FKBP51 Antibody

Rabbit Polyclonal

Antigen Affinity Purified

Protein ID NP_004108.1

Catalog No. A301-430A-M

GeneID 2289



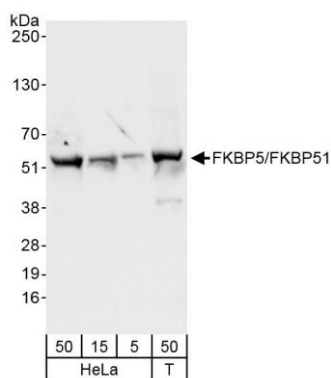
APPLICATIONS	WB, IP, IHC
SPECIES REACTIVITY	Human
PRESUMED REACTIVITY	Based on 100% sequence identity, this antibody is predicted to react with Orangutan
AMOUNT	100 µl (10 blots)
CONCENTRATION	40 µg/ml
STORAGE/SHELF LIFE	2 - 8° C / 1 year from date of receipt
PHYSICAL STATE	Liquid
BUFFER	Tris-buffered Saline containing 0.1% BSA and 0.09% Sodium Azide
ISOTYPE	IgG
ORIGIN	USA
PRODUCTION PROCEDURES	Antibody was affinity purified using an epitope specific to FKBP5/FKBP51 immobilized on solid support.

The epitope recognized by A301-430A-M maps to a region between residue 407 and 457 of human FK506 binding protein 5 (51 kDa FK506-binding protein) using the numbering given in entry NP_004108.1 (GeneID 2289).

APPLICATIONS	Centrifuge tube to remove product from lid. Optimal working dilutions should be determined experimentally by the investigator. Prepare working dilution immediately before use.
	Western Blot 1:1000
	Immunoprecipitation The antibody contained within A301-430A-M has been qualified for use in immunoprecipitation; however, we recommend using the alternative formulation of this antibody found as product A301-430A.
	Immunohistochemistry 1:40 - 1:200. Epitope retrieval with citrate buffer pH 6.0 is recommended for FFPE tissue sections.

APPLICATION NOTES Western blot of immunoprecipitates performed using Normal Pig Serum (Cat. No. S100-020), Goat anti-Rabbit Light Chain HRP Conjugate (Cat. No. A120-113P) and 4-20% SDS-PAGE (link to IP-western blot protocol in Additional Info section below).

ADDITIONAL INFO Western blot of lysates performed using standard western blot reagents and 4-20% SDS-PAGE. <https://www.bethyl.com/product/A301-430A-M>
Use the link above to view SDS, a current list of citations, and other product specific information. IP-western blot protocol https://www.bethyl.com/content/protocol_IP_WB

**Detection of human FKBP5/FKBP51 by western blot.**

Samples: Whole cell lysate from HeLa (5, 15 and 50 μ g) and HEK293T (T; 50 μ g) cells. *Antibodies:* Affinity purified rabbit anti-FKBP5/FKBP51 antibody A301-430A-M (lot A301-430A-M-1) used for WB at 1:1000. *Detection:* Chemiluminescence with exposure time of 3 seconds.