

# FKBP5/FKBP51 Antibody

Rabbit Polyclonal

Antigen Affinity Purified

Protein ID NP\_004108.1

Catalog No. A301-430A-T

GeneID 2289



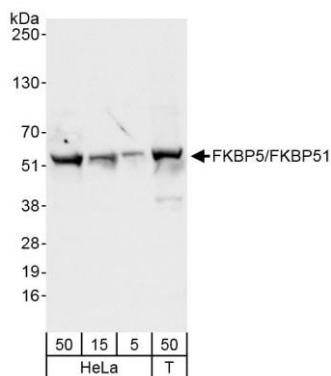
<b>APPLICATIONS</b>	WB, IP, IHC
<b>SPECIES REACTIVITY</b>	Human
<b>PRESUMED REACTIVITY</b>	Based on 100% sequence identity, this antibody is predicted to react with Orangutan
<b>AMOUNT</b>	20 µl (2 blots)
<b>CONCENTRATION</b>	40 µg/ml
<b>STORAGE/SHELF LIFE</b>	2 - 8° C / 1 year from date of receipt
<b>PHYSICAL STATE</b>	Liquid
<b>BUFFER</b>	Tris-buffered Saline containing 0.1% BSA and 0.09% Sodium Azide
<b>ISOTYPE</b>	IgG
<b>ORIGIN</b>	USA
<b>PRODUCTION PROCEDURES</b>	Antibody was affinity purified using an epitope specific to FKBP5/FKBP51 immobilized on solid support.

The epitope recognized by A301-430A-T maps to a region between residue 407 and 457 of human FK506 binding protein 5 (51 kDa FK506-binding protein) using the numbering given in entry NP\_004108.1 (GeneID 2289).

<b>APPLICATIONS</b>	Centrifuge tube to remove product from lid. Optimal working dilutions should be determined experimentally by the investigator. Prepare working dilution immediately before use.
	Western Blot 1:1000
	Immunoprecipitation The antibody contained within A301-430A-T has been qualified for use in immunoprecipitation; however, we recommend using the alternative formulation of this antibody found as product A301-430A.
	Immunohistochemistry 1:40 - 1:200. Epitope retrieval with citrate buffer pH 6.0 is recommended for FFPE tissue sections.

**APPLICATION NOTES** Western blot of immunoprecipitates performed using Normal Pig Serum (Cat. No. S100-020), Goat anti-Rabbit Light Chain HRP Conjugate (Cat. No. A120-113P) and 4-20% SDS-PAGE (link to IP-western blot protocol in Additional Info section below).

**ADDITIONAL INFO** Western blot of lysates performed using standard western blot reagents and 4-20% SDS-PAGE. <https://www.bethyl.com/product/A301-430A-T>  
Use the link above to view SDS, a current list of citations, and other product specific information. IP-western blot protocol [https://www.bethyl.com/content/protocol\\_IP\\_WB](https://www.bethyl.com/content/protocol_IP_WB)

**Detection of human FKBP5/FKBP51 by western blot.**

*Samples:* Whole cell lysate from HeLa (5, 15 and 50  $\mu$ g) and HEK293T (T; 50  $\mu$ g) cells. *Antibodies:* Affinity purified rabbit anti-FKBP5/FKBP51 antibody A301-430A-T (lot A301-430A-T-1) used for WB at 1:1000. *Detection:* Chemiluminescence with exposure time of 3 seconds.