

# HCF1 Antibody

Rabbit Polyclonal

Antigen Affinity Purified

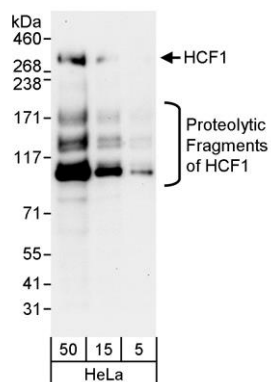
Protein ID NP\_005325.2

Catalog No. A301-400A-M

GeneID 3054



|                              |                                                                                                                                                                                                                                                                                                                                                                                                                                                                                                    |              |        |                     |                                                                                                                                                                                                   |
|------------------------------|----------------------------------------------------------------------------------------------------------------------------------------------------------------------------------------------------------------------------------------------------------------------------------------------------------------------------------------------------------------------------------------------------------------------------------------------------------------------------------------------------|--------------|--------|---------------------|---------------------------------------------------------------------------------------------------------------------------------------------------------------------------------------------------|
| <b>APPLICATIONS</b>          | WB, IP                                                                                                                                                                                                                                                                                                                                                                                                                                                                                             |              |        |                     |                                                                                                                                                                                                   |
| <b>SPECIES REACTIVITY</b>    | Human                                                                                                                                                                                                                                                                                                                                                                                                                                                                                              |              |        |                     |                                                                                                                                                                                                   |
| <b>PRESUMED REACTIVITY</b>   | Based on 100% sequence identity, this antibody is predicted to react with Mouse and Golden hamster                                                                                                                                                                                                                                                                                                                                                                                                 |              |        |                     |                                                                                                                                                                                                   |
| <b>AMOUNT</b>                | 100 µl (10 blots)                                                                                                                                                                                                                                                                                                                                                                                                                                                                                  |              |        |                     |                                                                                                                                                                                                   |
| <b>CONCENTRATION</b>         | 40 µg/ml                                                                                                                                                                                                                                                                                                                                                                                                                                                                                           |              |        |                     |                                                                                                                                                                                                   |
| <b>STORAGE/SHELF LIFE</b>    | 2 - 8° C / 1 year from date of receipt                                                                                                                                                                                                                                                                                                                                                                                                                                                             |              |        |                     |                                                                                                                                                                                                   |
| <b>PHYSICAL STATE</b>        | Liquid                                                                                                                                                                                                                                                                                                                                                                                                                                                                                             |              |        |                     |                                                                                                                                                                                                   |
| <b>BUFFER</b>                | Tris-buffered Saline containing 0.1% BSA and 0.09% Sodium Azide                                                                                                                                                                                                                                                                                                                                                                                                                                    |              |        |                     |                                                                                                                                                                                                   |
| <b>ISOTYPE</b>               | IgG                                                                                                                                                                                                                                                                                                                                                                                                                                                                                                |              |        |                     |                                                                                                                                                                                                   |
| <b>ORIGIN</b>                | USA                                                                                                                                                                                                                                                                                                                                                                                                                                                                                                |              |        |                     |                                                                                                                                                                                                   |
| <b>PRODUCTION PROCEDURES</b> | <p>Antibody was affinity purified using an epitope specific to HCF1 immobilized on solid support.</p> <p>The epitope recognized by A301-400A-M maps to a region between residue 1985 and 2035 of human host cell factor C1 (VP16-accessory protein) using the numbering given in entry NP_005325.2 (GeneID 3054).</p>                                                                                                                                                                              |              |        |                     |                                                                                                                                                                                                   |
| <b>APPLICATIONS</b>          | <p>Centrifuge tube to remove product from lid. Optimal working dilutions should be determined experimentally by the investigator. Prepare working dilution immediately before use.</p> <table><tr><td>Western Blot</td><td>1:1000</td></tr><tr><td>Immunoprecipitation</td><td>The antibody contained within A301-400A-M has been qualified for use in immunoprecipitation; however, we recommend using the alternative formulation of this antibody found as product A301-400A.</td></tr></table> | Western Blot | 1:1000 | Immunoprecipitation | The antibody contained within A301-400A-M has been qualified for use in immunoprecipitation; however, we recommend using the alternative formulation of this antibody found as product A301-400A. |
| Western Blot                 | 1:1000                                                                                                                                                                                                                                                                                                                                                                                                                                                                                             |              |        |                     |                                                                                                                                                                                                   |
| Immunoprecipitation          | The antibody contained within A301-400A-M has been qualified for use in immunoprecipitation; however, we recommend using the alternative formulation of this antibody found as product A301-400A.                                                                                                                                                                                                                                                                                                  |              |        |                     |                                                                                                                                                                                                   |
| <b>APPLICATION NOTES</b>     | <p>Western blot of immunoprecipitates performed using Normal Pig Serum (Cat. No. S100-020), Goat anti-Rabbit Light Chain HRP Conjugate (Cat. No. A120-113P) and 4-8% SDS-PAGE (link to IP-western blot protocol in Additional Info section below).</p> <p>Western blot of lysates performed using standard western blot reagents and 4-8% SDS-PAGE.</p>                                                                                                                                            |              |        |                     |                                                                                                                                                                                                   |
| <b>ADDITIONAL INFO</b>       | <p><a href="https://www.bethyl.com/product/A301-400A-M">https://www.bethyl.com/product/A301-400A-M</a></p> <p>Use the link above to view SDS, a current list of citations, and other product specific information.</p> <p>IP-western blot protocol: <a href="https://www.bethyl.com/content/protocol_IP_WB">https://www.bethyl.com/content/protocol_IP_WB</a></p>                                                                                                                                  |              |        |                     |                                                                                                                                                                                                   |



**Detection of human HCF1 by western blot.** *Samples:* Whole cell lysate (5, 15, and 50 µg) from HeLa cells. *Antibody:* Affinity purified rabbit anti-HCF1 antibody A301-400A-M used at 1:1000. *Detection:* Chemiluminescence with an exposure time of 30 seconds.