

HA Tag Antibody

Rabbit Polyclonal

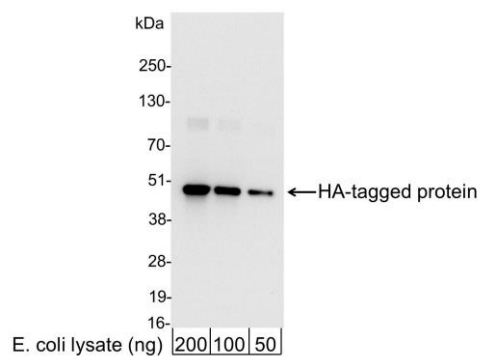
Conjugate HRP

Antigen Affinity Purified

Catalog No. A190-108P



APPLICATIONS	WB, IHC, ICC, ELISA								
AMOUNT	0.1 ml								
CONCENTRATION	1 mg/ml								
STORAGE/SHELF LIFE	2 - 8° C / 1 year from date of receipt								
PHYSICAL STATE	Liquid								
BUFFER	Phosphate Buffered Saline (PBS) containing 0.2% BSA and 0.05% Pro-Clean 400								
ISOTYPE	IgG								
ORIGIN	USA								
PRODUCTION PROCEDURES	<p>Rabbits were immunized with HA (YPYDVPDYA) conjugated to KLH. Antibody was isolated by affinity chromatography using the peptide immobilized on solid support and conjugated to horseradish peroxidase (HRP).</p> <p>Antibody concentration was determined by extinction coefficient prior to conjugation: absorbance at 280 nm of 1.4 equals 1.0 mg of IgG. Molar enzyme/antibody protein ratio is 4:1.</p>								
APPLICATIONS	<p>Centrifuge tube to remove product from lid. Optimal working dilutions should be determined experimentally by the investigator. Prepare working dilution immediately before use.</p> <table><tr><td>Western Blot</td><td>1:1,000 – 1:30,000</td></tr><tr><td>Immunohistochemistry</td><td>Not applicable</td></tr><tr><td>Immunocytochemistry</td><td>1:200 – 1:500</td></tr><tr><td>ELISA</td><td>1:10,000 – 1:100,000</td></tr></table>	Western Blot	1:1,000 – 1:30,000	Immunohistochemistry	Not applicable	Immunocytochemistry	1:200 – 1:500	ELISA	1:10,000 – 1:100,000
Western Blot	1:1,000 – 1:30,000								
Immunohistochemistry	Not applicable								
Immunocytochemistry	1:200 – 1:500								
ELISA	1:10,000 – 1:100,000								
APPLICATION NOTES	<p>Not all listed applications have been specifically tested by our laboratory.</p> <p>Validation by Western Blot was performed using a Western Blot Gel 4-20%.</p>								
ADDITIONAL INFO	<p>https://www.bethyl.com/product/A190-108P</p> <p>Use the link above to view SDS, a current list of citations, and other product specific information.</p>								



Detection of HA-tagged Protein by western blot. *Samples:* 200, 100, or 50 ng of E. coli whole cell lysate expressing a multi-tag fusion protein. *Antibodies:* Affinity-purified, HRP-conjugated, rabbit anti-HA antibody A190-108P used for WB at 0.04 $\mu\text{g}/\text{ml}$ (1:25,000). *Detection:* Chemiluminescence with an exposure time of 3 seconds.