

Myc Tag Antibody

Rabbit Polyclonal

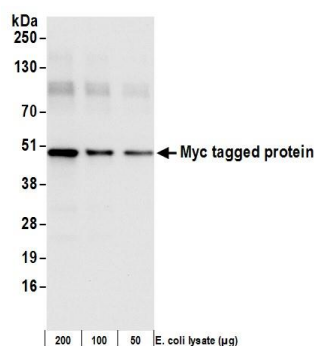
Antigen Affinity Purified

Catalog No. A190-105A

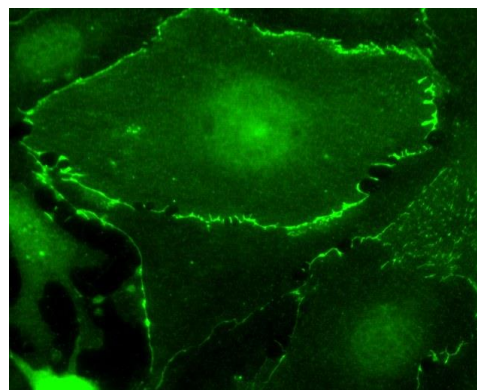
GeneID 4609



APPLICATIONS	WB, IP, ICC, ELISA								
AMOUNT	0.1 ml								
CONCENTRATION	1 mg/ml								
STORAGE/SHELF LIFE	2 - 8° C / 1 year from date of receipt								
PHYSICAL STATE	Liquid								
BUFFER	Phosphate Buffered Saline (PBS) containing 0.09% Sodium Azide								
ISOTYPE	IgG								
ORIGIN	USA								
PRODUCTION PROCEDURES	<p>Rabbits were immunized with a synthetic peptide representing amino acid residues 410-419 (EQKLISEEDL) of human myc conjugated to KLH. Antibody was isolated by affinity chromatography using the peptide immobilized on solid support.</p> <p>Antibody concentration was determined by extinction coefficient: absorbance at 280 nm of 1.4 equals 1.0 mg of IgG.</p>								
APPLICATIONS	<p>Centrifuge tube to remove product from lid. Optimal working dilutions should be determined experimentally by the investigator. Prepare working dilution immediately before use.</p> <table><tr><td>Western Blot</td><td>1:1,000 – 1:30,000</td></tr><tr><td>Immunoprecipitation</td><td>1 – 4 µg/mg lysate</td></tr><tr><td>Immunocytochemistry</td><td>1:100 – 1:400</td></tr><tr><td>ELISA</td><td>1:1,000 – 1:30,000; for coating plates 1:100 – 1:500</td></tr></table>	Western Blot	1:1,000 – 1:30,000	Immunoprecipitation	1 – 4 µg/mg lysate	Immunocytochemistry	1:100 – 1:400	ELISA	1:1,000 – 1:30,000; for coating plates 1:100 – 1:500
Western Blot	1:1,000 – 1:30,000								
Immunoprecipitation	1 – 4 µg/mg lysate								
Immunocytochemistry	1:100 – 1:400								
ELISA	1:1,000 – 1:30,000; for coating plates 1:100 – 1:500								
APPLICATION NOTES	<p>Not all listed applications have been specifically tested by our laboratory.</p>								
ADDITIONAL INFO	<p>Validation by Western Blot was performed using a Western Blot Gel 4-20%. https://www.bethyl.com/product/A190-105A Use the link above to view SDS, a current list of citations, and other product specific information.</p>								

**Detection of c-myc-tagged Protein by western blot.**

Samples: 200, 100, or 50 ng of E. coli whole cell lysate expressing a multi-tag fusion protein. *Antibody:* Affinity purified rabbit anti-Myc Tag antibody A190-105A used for WB at 0.04 µg/ml (1:25,000). *Detection:* Chemiluminescence with an exposure time of 3 seconds.

**Detection of c-myc Tagged Plakoglobin by immunofluorescence.**

Samples: Human microvascular endothelial cells expressing c-myc tagged plakoglobin following transient transfection. *Antibody:* Affinity purified rabbit anti-Myc Tag (Cat. No. A190-105A) used at 1 µg/ml. *Detection:* FITC labeled goat anti-rabbit IgG (h+l).